

MASTER BUILDERS

T A S M A N I A

AWARDS *for* EXCELLENCE

WINNERS 2025



Supporting the
Master Builders Tasmania
Awards for Excellence.

For what
comes *next*.



We all love having our own little piece of security and freedom. A place to call our own. For more than 150 years we've been supporting Tasmanians to realise the dream of home ownership – a thread that remains unbroken to this day.

Together with Master Builders Tasmania, we're helping to create a prosperous future for all Tasmanians.

We're not just a bank for the here and now. We're for what comes next.

bankofus.com.au 1300 306 716

Bank of us is a trading name of B&E Ltd. ABN 32 087 652 088 AFSL & Australian Credit Licence 236870



Bank of us.

Tasmania | Community | Customer

Welcome!

Welcome to the 2025 Master Builders Tasmania Awards for Excellence – Winners Lift-Out.

We're proud to present the finalists and winners of the 2025 Master Builders Tasmania Awards for Excellence – a celebration of the outstanding talent, craftsmanship, and innovation across our state's building and construction industry.

Since the first awards night in Hobart back in 1991, the program has grown in scope and prestige. This year, we're recognising excellence across 49 award categories, with 142 entries showcasing the best in residential, commercial, and civil construction. Inside this special lift-out, you'll discover an inspiring collection of projects – from custom-built homes and public infrastructure

to social housing and commercial developments. Each entry reflects the passion and professionalism of the teams behind them.

Our finalists and winners represent the very best of the industry, raising the bar and setting new standards for quality and innovation in construction.

We invite you to explore the pages ahead, discover the remarkable achievements of Tasmania's builders, and maybe even find the perfect builder for your next dream project. And don't forget to cast your vote in our People's Choice competition for your chance to win some fantastic prizes!



People's Choice



COMPETITION

Vote for your favourite to take out the People's Choice Award! Simply scan the QR code for all the details on how.

Voting closes at midday on Wednesday 24th September, 2025. Winners will be notified on Thursday 25th September, 2025.

Proudly
sponsored
by CBUS



TASBUILD

PORTABLE LONG SERVICE LEAVE

Portable Long Service Leave Scheme for the Construction Industry

TasBuild manages the long service scheme in the construction industry

Employers pay into the scheme for employees

TasBuild tracks employment across multiple employers

TasBuild pays once the employee has reached an entitlement

Proudly serving: Employers • Employees • Self Employed



For further information contact TasBuild on

Telephone (03) 6294 0807 | Email secretary@tasbuild.com.au

www.tasbuild.com.au



IN2CONSTRUCTION

In2Construction has once again demonstrated exceptional capability and commitment to quality through a suite of outstanding residential projects submitted to the 2025 Master Builders Tasmania Awards.

Notably, Tiff's Place won the Renovation/Addition award in the \$650,000–\$1 million category, while Dunalley House was recognised in the Dwelling Construction over \$6 million category.

Other exemplary entries included Mountain River House and Workman's Cottage and Extension, each showcasing thoughtful design, craftsmanship, and precision execution.

In2Construction's success stems from their technical skill, meticulous project management, and strong client relationships, consistently delivering excellence across diverse, complex builds. They are highly commended for their pursuit of residential construction excellence.

SPONSORED BY: Clennett's Mitre 10



RESIDENTIAL BUILDER *of* THE YEAR, 2025



Fairbrother

COMMERCIAL BUILDER *of* THE YEAR, 2025



FAIRBROTHER CONSTRUCTION

Winner of two special awards, two major awards and two Tasmanian awards in this year's Awards program, Fairbrother's UTAS Willis Street project is outstanding.

Addressing construction in the most comprehensive way Fairbrother has shown excellence in the project's delivery, achieving key sustainability benchmarks and embracing innovative Australian products along the way.

The success of Fairbrother's joinery division in the Specialist Contractor of the Year category is icing on the cake.

This sweep of award categories demonstrates a level of commitment that is appropriately recognised by this Award.

SPONSORED BY: Becks Mitre 10

JOSH ROWE
JDR Homes

Our Young Builder of the Year is a visionary leader who's transformed residential construction on Tasmania's North-West Coast.

At just 22, Joshua Rowe founded JDR Homes and today leads a thriving business with over 30 staff and more than 300 homes built.

His innovative design-and-construct model, commitment to quality and deep community ties have set a new standard for the industry.

From championing first home buyers through the My Home Scheme, to mentoring young apprentices and investing in staff wellbeing, Josh's impact reaches far beyond the build site.

A builder, a leader, and a changemaker — congratulations to Joshua Rowe of JDR Homes, Young Builder of the Year, 2025!

REGION: North-West

SPONSORED BY: Bank of Us



YOUNG BUILDER *of* **THE YEAR, 2025**



SMALL BUILDER *of* **THE YEAR, 2025**

IN2CONSTRUCTION

With nearly 20 years of excellence, In2Construction has redefined boutique building in Tasmania through meticulous attention to detail, industry-leading craftsmanship and a strong client-first approach.

Led by directors Jason Wagner and Peter Ventieri, the company is known for its architecturally celebrated, award-winning homes such as Coopworth House and Beaupre House.

With over 28 industry awards and a 90% project conversion rate, In2Construction continues to set the bar for small-scale building.

Driven by honesty, collaboration, precision, with a commitment to safety, sustainability and a supportive workplace culture.

REGION: South

SPONSORED BY: CBOS

KURT WALTERS AJR Construct

Kurt Walters has demonstrated outstanding leadership, skill, and initiative throughout his apprenticeship.

A dual tradesman with a background in glazing, Kurt quickly stood out for his maturity, adaptability and proactive approach.

From supervising complex school projects to managing remote builds on King Island and leading teams on the \$10 million Fermentation Hub in Legana, Kurt has consistently displayed strong planning, problem-solving, and safety management skills.

Committed to continuous learning and driven by a passion for building, Kurt exemplifies the future of Tasmania's construction industry.

REGION: North-West
SPONSORED BY: Total Tools & TasTAFE



STATE APPRENTICE *of* THE YEAR, 2025



DANIEL FINEARTY VOS Construction & Joinery

Daniel Finearty has shown exceptional hands-on skills, adaptability and problem-solving ability throughout his apprenticeship.

From his early days in the joinery workshop to leading complex on-site installations, Daniel's work ethic and precision have made him highly sought after within his company.

His experience includes remote and mainland projects such as fit-outs across Australia and work at the Sydney Opera House, where his calm approach under pressure and ability to adapt ensured project success.

Now a qualified tradesperson, Daniel is already leading teams on major projects, demonstrating maturity and craftsmanship beyond his years.

REGION: South
SPONSORED BY: Total Tools & TasTAFE

HANDS-ON APPRENTICE *of* THE YEAR, 2025

FAIRBROTHER JOINERY
UTAS
Willis Street Joinery

Fairbrother's joinery work within the UTAS Willis Street project is of an exemplary scale, diversity and quality.

The scope includes substantial LVL trusses that span the atrium, extensive wall and ceiling linings of considerable complexity and differing materiality, fitted laboratory joinery and freestanding bespoke Tasmanian Oak tables. All elements of the joinery work have been finished to an enviable standard.

The UTAS Willis Street project could not offer a more compelling showcase of Fairbrother's skills and capacity.

DESIGNED BY: Wardle
PHOTOGRAPHY: Rob Burnett
REGION: North
SPONSORED BY: Meyer Timber




Fairbrother
SPECIALIST CONTRACTOR *of* THE YEAR, 2025




Fairbrother
UNIQUE ACHIEVEMENT IN CONSTRUCTION, 2025

FAIRBROTHER
CONSTRUCTION
St Lukes Health

This category acknowledges exceptional projects which have not been captured elsewhere in the Awards program.

This is the case for Fairbrother's work in completing Tasmania's first multi-storey mass timber building at St Lukes Health.

Extraordinary challenges included becoming familiar with the demands of building with GLT & CLT & organising the supply logistics of these materials from a suite of international & local suppliers.

The final result is a striking building that showcases its mass timber credentials & offers a vibrant, permeable contribution to the local urban realm.

DESIGNED BY: Terrior
PHOTOGRAPHY: Dave Groves
REGION: North
SPONSORED BY: CBUS

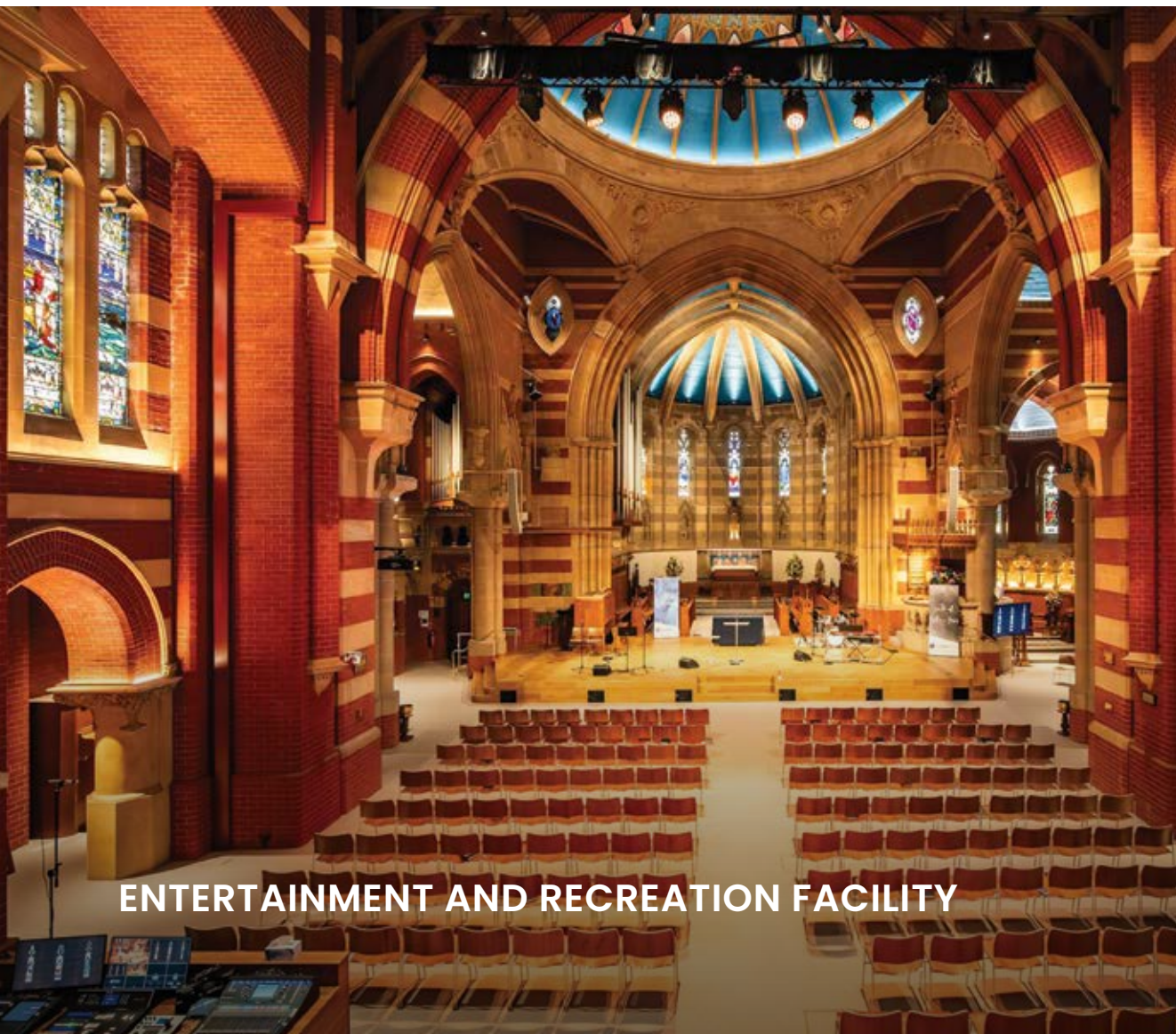
**VOS CONSTRUCTION
& JOINERY**
**Launceston General
Hospital Helipad**

Vos Construction & Joinery has successfully delivered a logistically challenging and engineering-heavy project.

The construction team has shown a high level of skill in navigating the multiple challenges of working at height, demanding regulatory and technical requirements and working within and around not only an existing building, but also within a busy urban precinct, with traffic movements at all hours of the day and night.

That these constraints have been managed without impact on project quality, program or cost indicates an exemplary level of construction proficiency.

DESIGNED BY: ARTAS Architects
PHOTOGRAPHY: Prime Perspectives
REGION: North
SPONSORED BY: ARC



ENTERTAINMENT AND RECREATION FACILITY

T-BUILT
St Johns Anglican

T-Built's St John's Anglican project demonstrates great skill in the integration of extensive new works seamlessly with heritage fabric.

Work which looks seamless is often the most difficult to achieve and T-Built has worked collaboratively and imaginatively with the client and a team of specialist consultants to ensure that the redevelopment of the space into a dynamic entertainment venue has been as successful as possible.

The finished project effects an outstanding transformation and makes it a most worthy winner of this Award.

DESIGNED BY: Cumulus Studio
PHOTOGRAPHY: Tassie Visuals
REGION: North
SPONSORED BY: James Hardie

VOS CONSTRUCTION & JOINERY Launceston General Hospital Helipad

This project presented significant challenges due to its complex scope of works, the sensitivity of the hospital environment and the need to maintain uninterrupted hospital operations.

The exemplary planning, documentation and execution of all aspects of work health and safety on this time-critical project are to be commended.

The safety of workers, construction stakeholders, hospital staff and the public was prioritised at every stage.

An excellent project demonstrating industry-leading WHS practices in a highly complex setting.

DESIGNED BY: ARTAS Architects
PHOTOGRAPHY: Prime Perspectives
REGION: North
SPONSORED BY: Hazard Co



MEAD CON Veolia Spreyton

Exhibiting scale & finesse, this project demonstrates Mead Con’s civil capability and its capacity to deliver a significant project to a tight program.

40,000 cubic metres of soil was excavated and removed across 12 weeks during winter, then 13,000 square metres of hardstand and a 5,500 square metre building frame and roof were delivered in stages to allow early client installation of equipment, before the buildings and fire suppression system were completed.

Knowledgeable project management ensured that design changes were accommodated without impact on program or budget.

DESIGNED BY: TCS
PHOTOGRAPHY: Simon Sturzaker
REGION: North-West
SPONSORED BY: Cement Australia



Cbus Super is a proud sponsor
of the Master Builders Tasmania
2025 Awards for Excellence,
recognising projects and
progress in TAS

Congratulations to the award winners



1300 361 784



cbussuper.com.au

This information is about Cbus and doesn't take into account your specific needs. You should look at your own financial position, objectives and requirements before making any financial decisions. Read the relevant Cbus Product Disclosure Statement and Target Market Determination to decide if Cbus is right for you. Call 1300 361 784 or visit cbussuper.com.au for a copy.

United Super Pty Ltd ABN 46 006 261 623 AFSL 233792 as Trustee for the Construction and Building Unions Superannuation Fund
ABN 75 493 363 262 (Cbus and/or Cbus Super)

**FAIRBROTHER
CONSTRUCTION
UTAS Willis Street**

Fairbrother’s UTAS Willis Street project sets a benchmark for educational outcomes on a number of levels.

The building’s class-leading simulation and laboratory spaces provide high quality teaching and learning environments and the overall quality of the building contributes to student engagement.

Fairbrother’s commitment to master the complexities of the construction, involving the use of new and unfamiliar construction methodologies, technically demanding spatial typologies and unfamiliar materials, is to be applauded.

The outcome is an exemplary, once-in-a-generation educational asset for Tasmania that showcases not just educational excellence but construction excellence.

DESIGNED BY: Wardle
PHOTOGRAPHY: Rob Burnett
REGION: North
SPONSORED BY: MAS National



**BARWICK DEVELOPMENTS
McEwans Project**

The McEwans Road soil and water management project showcases technical excellence and environmental care on a P-Class landslip site. Works included 260 metres of 4-metre-deep relief trenches, 10 groundwater wells, extensive drainage, silt traps and ground stability monitoring.

Rapid responses to heavy rain and close collaboration with engineers and council set a benchmark in proactive geotechnical risk management.

**FAIRBROTHER CONSTRUCTION
UTAS Willis Street**

Fairbrother’s UTAS Willis Street project is located on an historic industrial site with significant soil and water contamination by heavy metals, hydrocarbons and asbestos and with soils exhibiting acid sulfate characteristics. Fairbrother’s management of this material during substantial earthworks was comprehensive, with excavated material classified and protected prior to appropriate disposal, and site water transferred around the site for re-absorption to eliminate the need for disposal to the stormwater system.

This comprehensive and proactive approach demonstrates a best practice environmental and health and safety approach and is commended.



FORM PROJECTS

Mountain House

This one-bedroom residence sets a benchmark in sustainable design, craftsmanship and innovation. Built for environmentally conscious clients, it features corten steel cladding and meets BAL 40 standards. Internally, a refined palette of hardwood ply, brass details and PVC-free Comcork flooring creates a warm, chemical-free environment.

Fully off-grid and passive, the home incorporates triple-glazed windows, low-carbon concrete and avoids structural steel. Natural Ozmo finishes and recycled timber furniture reflect a commitment to eco-friendly materials. Site-specific strategies minimised environmental impact, including earth retention and microplastic mitigation.

This project exemplifies integrity and precision in sustainable, handcrafted architecture.

DESIGNED BY: Studio Steen
PHOTOGRAPHY: Anjie Blair
REGION: North
SPONSORED BY: TasBuild



SUSTAINABILITY – RESIDENTIAL




Fairbrother
SUSTAINABILITY – COMMERCIAL

FAIRBROTHER

CONSTRUCTION

UTAS Willis Street

Fairbrother's sustainability focus in UTAS Willis Street has been on reducing the project's embodied carbon footprint, particularly through the use of sustainable structural timber and other plant-based materials, a high performance building envelope and energy efficient plant and equipment.

In parallel Fairbrother has maintained a laser-focus on construction quality in a highly technical building.

The result is an outstanding project that makes a meaningful contribution to reduced carbon emissions and offers a model for carbon emission reduction, producing around 35% less carbon emissions than a comparable conventional building.

DESIGNED BY: Wardle
PHOTOGRAPHY: Rob Burnett
REGION: North
SPONSORED BY: Go Company

BURLEIGH & DEAN Claremont Oak Estate

This exceptional restoration at Claremont Homestead exemplifies traditional craftsmanship, precision detailing and heritage respect.

The project involved the faithful removal and reconstruction of a 1940s street-facing verandah, seamlessly integrated with the original 1901 structure using salvaged and custom-turned timber posts and fretwork. A structurally compliant roof frame was expertly crafted to intersect with the original roof valley, achieving visual harmony.

Inside, dimensionally perfect cabinetry supports handmade Japanese finger tiles and finely finished parquet floors. Complex elements like a concealed 14-metre window and integrated hidden services highlight the technical excellence and innovation throughout this elegant heritage restoration.

DESIGNED BY: Cumulus Studio
PHOTOGRAPHY: Sarah Rhodes
REGION: North
SPONSORED BY: MBIB



RESTORATION/RENOVATION
HERITAGE LISTED OR PERIOD BUILDING – RESIDENTIAL



HANSEN YUNCKEN
RESTORATION/RENOVATION
HERITAGE LISTED OR PERIOD BUILDING – COMMERCIAL

HANSEN YUNCKEN Philip Smith Centre

This category acknowledges excellence in the restoration or renovation of non-residential buildings constructed prior to 1970, with period features either restored or re-created.

Hansen Yuncken has carried out works in the true spirit of this Award, using the same techniques and materials as used in the original building, at the same time as creating unique contemporary teaching and learning spaces.

Interventions have been completed with finesse, sensitivity and the closest attention to detail and make this project a model of heritage restoration and renovation.

DESIGNED BY: Lovell Chen
PHOTOGRAPHY: Rosie Hastie
REGION: South
SPONSORED BY: Mazda

BARWICK DEVELOPMENTS McEwans Project

McEwans Project exemplifies superior craftsmanship and the finest locally sourced Australian materials. The exterior features over 8,500 linear metres of Spotted Gum Shou Sugi Ban cladding, a traditional Japanese technique adapted to Australian hardwood, delivering durability, fire and resistance. Complementing this is 2,500 linear metres of Spotted Gum decking, beautifully installed for strength and functionality.

Inside, solid and veneered Spotted Gum add warmth to the kitchen, while Tasmanian Oak is used throughout cabinetry and mouldings. The polished concrete floor, embedded with Tasmanian river pebbles, showcases natural beauty in a durable, low- maintenance finish. This home celebrates Australian materials and craftsmanship, deserving recognition for the Best Use of Australian Made Products Award.

DESIGNED BY: Cumulus Studio
PHOTOGRAPHY: Renee Hodskiss
REGION: North
SPONSORED BY: Flying Colours



FAIRBROTHER CONSTRUCTION UTAS Willis Street

From the exterior Aramax cladding to the interior Envisia concrete and extensive timberwork, Fairbrother’s UTAS Willis Street project is a panoply of Australian sourced and made products.

It is noteworthy that the use of some materials, in particular Tasmanian Blue Gum heated flooring and Tasmanian Eucalyptus nitens GLT and veneer, have been used here in early adoption of this emerging technology.

The extent and quality of materials used, the workmanship in their fabrication and installation and the industry-leading innovation in their use make this a great showcase of Australian-made products.

DESIGNED BY: Wardle
PHOTOGRAPHY: Rob Burnett
REGION: North
SPONSORED BY: CBUS

MODERN HOMES Waverly Heights

Waverley Heights exemplifies how smart construction and collaboration deliver enduring value and appeal. This home sets a benchmark for quality, combining durability, sustainability & thoughtful design within a competitive budget. Featuring brick veneer cladding, tiled roofing, double glazing, and low-maintenance landscaping, it presents strong street appeal.

Inside, integrated appliances, custom cabinetry and quality finishes enhance functionality. Open-plan living maximises natural light, with insulation and ventilation ensuring comfort.

Overcoming a sloped, bushfire-prone site, engineered drainage, non- combustible materials and water storage were integrated. Achieving a record sale price, this project exemplifies value-driven design and craftsmanship.

DESIGNED BY: Design to Live
PHOTOGRAPHY: Clint Leonard
REGION: North
SPONSORED BY: Bank of Us



CUNIC HOMES North West Bay Estate

Northwest Bay Estate in Margate is a carefully constructed multi-residential community designed for over-50s.

Set on a challenging sloping site amid native bushland, the development includes a large communal hall and landscaped gardens, enhancing accessibility and community connection.

Featuring two flexible home designs, timber-framed with brick veneer and trussed roofs, these well-built, cost-effective dwellings offer open-plan living, private garages and generous outdoor spaces.

With a focus on comfort, functionality and independence, Northwest Bay Estate provides quality housing that enriches lifestyle and stands as a valuable addition to the Margate community.

DESIGNED BY: Another Perspective
PHOTOGRAPHY: Open2View
REGION: South
SPONSORED BY: Simmons Wolfhagen

BARWICK DEVELOPMENTS McEwans Project

This large ensuite showcases precision craftsmanship and unwavering quality, creating a luxurious and serene retreat with views over the Tamar.

The generous layout includes a double shower, freestanding bath, WC and basin, balancing function and indulgence.

Meticulous tiling in varied formats and expertly installed fittings reflect the high standard of workmanship.

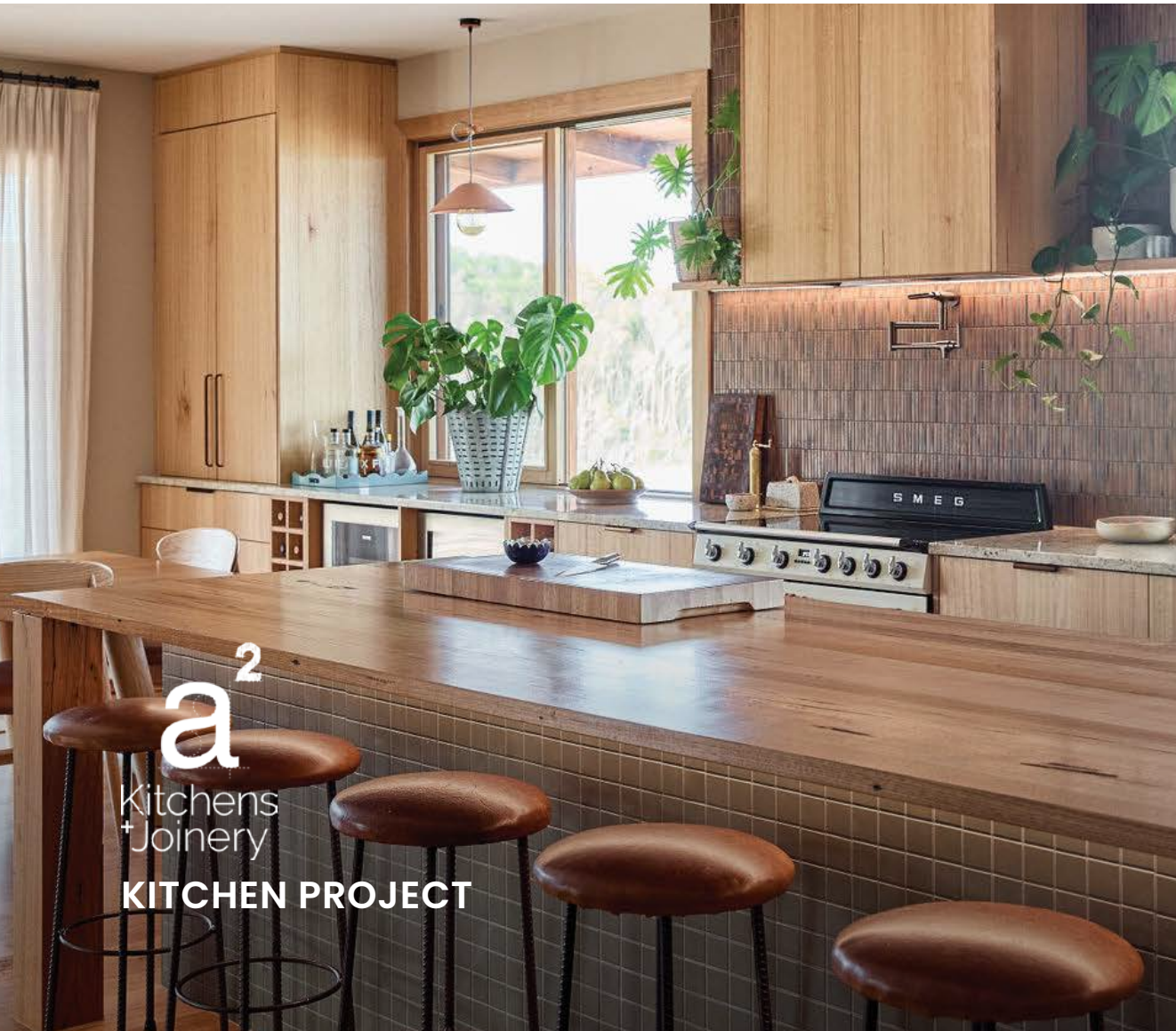
Half-height tiled shower walls, elegant timber floating shelves, and a custom timber vanity with brass fittings add refined detail.

This ensuite exemplifies the builder's skill in delivering complex detailing with seamless execution, achieving exceptional quality, luxury, and functionality.

DESIGNED BY: Cumulus Studio
PHOTOGRAPHY: Renee Hodskiss
REGION: North
SPONSORED BY: TasWater



BARWICK
BATHROOM PROJECT



A2 KITCHENS & JOINERY Quoin Farm

The Quoin Farm kitchen is a remarkable demonstration of regional craftsmanship, resourcefulness, and refined execution.

Located near Killecrankie on Flinders Island, A2 Kitchens & Joinery collaborated closely with the client and interior designer in a live, hands-on process.

Fabricated meticulously in Launceston, every component was carefully packed and transported to the island, where the contractors lived on site to oversee installation. The result is a sophisticated timber kitchen featuring timber and stone benchtops, textured splashbacks and precisely integrated fittings.

This project exemplifies exceptional craftsmanship, collaboration, and commitment to quality in a challenging regional setting.

DESIGNED BY: Emily Fitzgerald
PHOTOGRAPHY: Ness Vanderburgh
REGION: North
SPONSORED BY: Clennett's Mitre 10

a²
Kitchens & Joinery
KITCHEN PROJECT

DAN BUSH BUILDING CO
Sauna Boat Tasmania

Dan Bush Building Co have pushed the envelope of what builders do with its Sauna Boat Tasmania.

Is it a boat?
Is it a building?
Is it a sauna?

No, it's a sauna boat!

Just as the builder has pushed the definition envelope, it has also confronted the challenges of a new typology, with a need to consider Australian Maritime Safety Authority requirements just as much as those relating to building. It has done so with aplomb and panache.

DESIGNED BY: Dan Bush Building Co
PHOTOGRAPHY: Graham King
REGION: South
SPONSORED BY: Simmons Wolfhagen



Tasmania's building and
construction industry regulator

cbos.tas.gov.au



CUNIC HOMES

The Woodland

Nestled in the scenic Huon Valley, The Woodland by Cunic Homes is a functional and family-friendly 3-bedroom, 2-bathroom home with a double garage.

Built on a steep corner block beside a busy highway, the team delivered complex retaining and landscaping works to enhance privacy and provide effective noise buffering.

Externally finished with James Hardie Linea Weatherboards and immaculate landscaping and internally featuring bespoke joinery and a warm palette, the home is both practical and cost-efficient.

With clear pride in workmanship evident throughout, The Woodland is a worthy winner.

DESIGNED BY: Prime Design
PHOTOGRAPHY: Open2View
REGION: South
SPONSORED BY: James Hardie



DISPLAY HOME – \$400,000 – \$600,000



WILSON
HOMES

DISPLAY HOME – \$600,000 – \$800,000

WILSON HOMES

Clearwater 32 Country Club

Located at the Prospect Country Club, Clearwater 32 by Wilson Homes is a sophisticated two-storey, 4 bedroom, 2 bathroom display home built with exceptional craftsmanship.

Designed with a reverse-living layout to take advantage of scenic views, the home features generous bedrooms, a leisure room and study nook on the ground floor, while the upper level offers a spacious master suite and open-plan living flowing to an outdoor entertaining area.

Externally finished in brick, cement sheet and fine texture cladding with Colorbond roofing and low-maintenance decking, the home showcases Wilson Homes' commitment to quality construction.

DESIGNED BY: Wilson Homes
PHOTOGRAPHY: Clint Leonard
REGION: North
SPONSORED BY: Becks Mitre 10

JOSCON TASMANIA

The Mary

The Mary at Midway Point is JOSCON Tasmania's first long-term display home, also serving as a satellite office and client selection centre.

Refined through experience on previous builds, this split-level, open-plan home is light-filled, spacious and comfortable. Showcasing flexibility and site responsiveness, it features three ceiling heights and carefully placed windows to capture key views. The home reflects JOSCON's "level up" philosophy through high-end standard inclusions and premium upgrades.

With custom bricks, steel cladding, ducted HVAC, heated alfresco, and even a dog wash station, The Mary exemplifies JOSCON's commitment to quality construction, thoughtful detail and joyful living.

DESIGNED BY: Another Perspective
PHOTOGRAPHY: Promote Property
REGION: South
SPONSORED BY: Clennett's Mitre 10



Build your modern life

Discover how the #1 cladding brand in Australia can help you build your dream modern home.



Discover what's shaping new directions in contemporary home design and download the Forecast here.



It's Possible™ with James Hardie

© 2025. James Hardie Australia Pty Ltd. ABN 12 084 635 558
Registered mark owned by James Hardie Technology Ltd.

James Hardie is a proud sponsor of the Master Builders Tasmania 2025 Awards for Excellence.



FORM PROJECTS

Workers Cottages

This project involved the sensitive restoration and thoughtful extension of two historic Georgian cottages in Launceston's heart.

Key works included brick repointing and rendering, new doors and windows, roof replacements, floor reconstruction and fire wall retrofitting, with heritage masonry ensuring authentic repairs. Contemporary copper-clad extensions, executed by a specialist sheet metal contractor, feature seamless roof-to-wall junctions and integrated gutters.

Complementary landscaping includes corten steel planters and concrete stairs. Challenging site constraints demanded careful coordination and neighbour communication.

The project's success reflects genuine collaboration and blends historical integrity with refined modern craftsmanship.

DESIGNED BY: Gillian Van der Schans

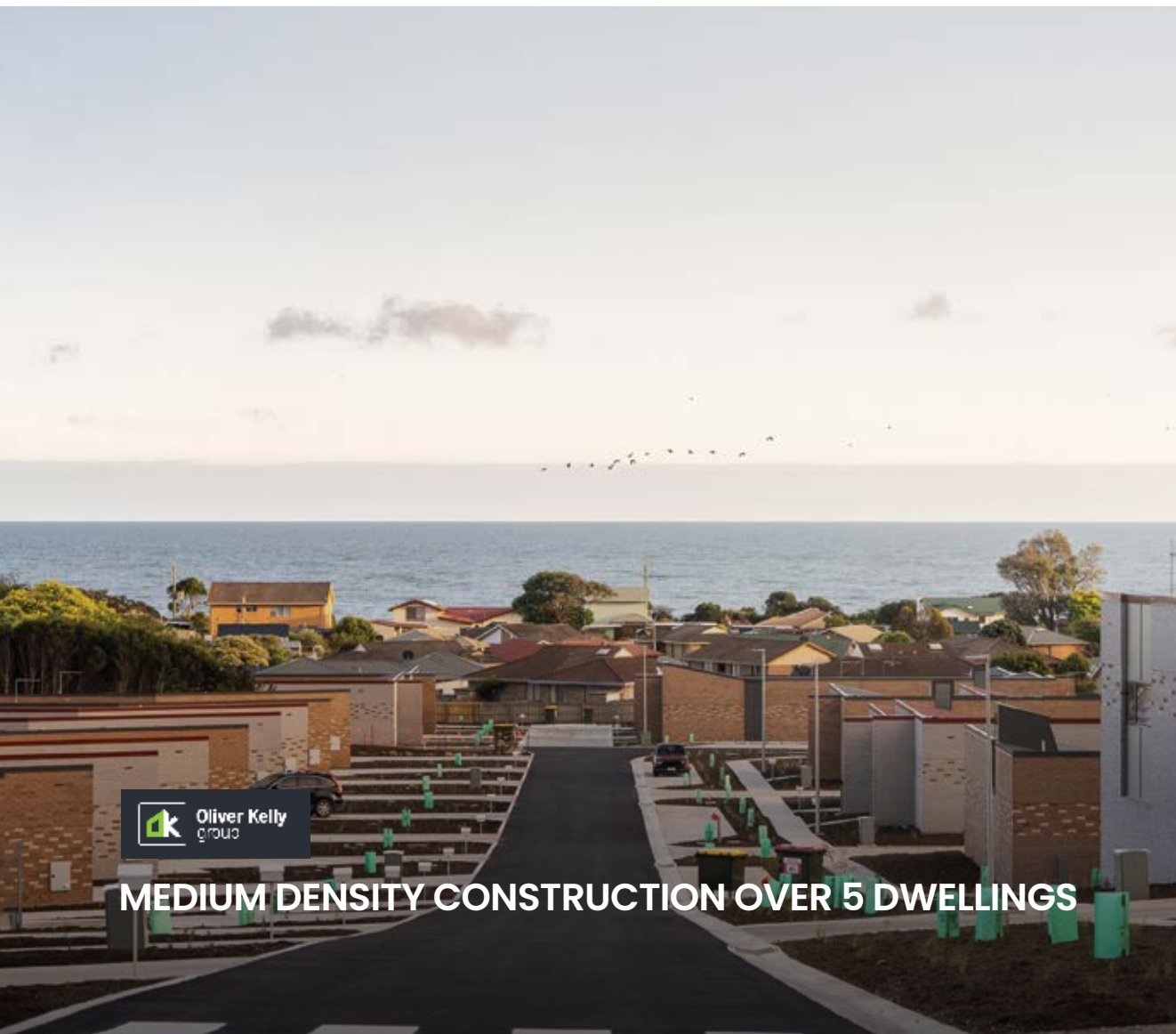
PHOTOGRAPHY: Ness Vanderburgh

REGION: North

SPONSORED BY: Island Block & Paving



MEDIUM DENSITY CONSTRUCTION 2 – 5 DWELLINGS



OLIVER KELLY GROUP

Breheny Project

Breheny Place is a large-scale affordable housing development comprising 48 dwellings with communal amenities and outdoor spaces. Delivered on a tight schedule, the project demanded rigorous planning, coordination and construction expertise.

Challenging site conditions, including steep gradients, limited access and confined spaces, required careful logistical management and the installation of retaining walls and advanced drainage systems. The consistent quality of construction across varied dwelling types, alongside substantial civil works and native vegetation retention, highlights the project's complexity.

Seamless collaboration across trades exemplifies construction excellence in this significant community-focused development.

DESIGNED BY: Cumulus Studio

PHOTOGRAPHY: Mason Doherty

REGION: North-West

SPONSORED BY: Austral Bricks



MEDIUM DENSITY CONSTRUCTION OVER 5 DWELLINGS

DREW PROJECTS Begonia

Begonia is a finely executed kitchen and bathroom renovation that honours the architectural character of a cherished late mid-century home.

The new kitchen, positioned at the rear of the open-plan living space, features highly detailed joinery with seamlessly integrated modern appliances and clean, practical finishes. Natural light fills the space through a horizontal window and skylights.

The compact bathroom draws inspiration from the garden, with gentle curves enhancing both form and function.

This modest yet beautifully built project exemplifies careful craftsmanship and thoughtful design, elevating everyday living with comfort, beauty and respect for the original architecture.

DESIGNED BY: So Architecture

PHOTOGRAPHY: Marcus Enno

REGION: South

SPONSORED BY: MBIB



RENOVATION / ADDITION UNDER \$200,000



JAMIESON EDWARDS Cliff House

Built in 1974, the Cliff House renovation expertly balances modernisation with respect for the home's original character. Key upgrades include double-glazed windows and doors, new bathrooms, kitchen, pantry and bespoke interior joinery.

Extensive asbestos removal demanded rigorous safety protocols. The project overcame typical 1970s construction challenges through creative methodologies, seamlessly integrating new work with complex existing geometries. Close collaboration among client, subcontractors, and consultants ensured smooth execution.

Featuring bold colours, hidden pantry and playful details, this thoughtful renovation showcases the builder's skill, craftsmanship, and commitment to quality, honouring the past while embracing a vibrant contemporary vision.

DESIGNED BY: Jamieson Edwards

PHOTOGRAPHY: Rosie Hastie

REGION: South

SPONSORED BY: James Hardie

RENOVATION / ADDITION \$200,000 - \$400,000

NW CONCEPTS River Reno

The River Reno transforms a late-century riverfront residence into a sophisticated home while honouring its original character. The renovation blends traditional elements with contemporary finishes, featuring a metal-clad addition that complements existing brickwork. Internally, skylights brighten the kitchen, balancing black joinery and granite benchtops with warm timber flooring and custom sassafras details.

Complex engineering and large structural installations required careful coordination. NW Concepts' close collaboration with client and subcontractors ensured scope, quality and cost expectations were exceeded.

In-house fabricated steel handrails and enhanced thermal performance showcase their commitment to craftsmanship and sustainability, making this project a standout community achievement.

DESIGNED BY: Jesse French
PHOTOGRAPHY: Tracy Vagg
REGION: South
SPONSORED BY: ARC



RENOVATION / ADDITION \$400,000 – \$650,000



in2construction

RENOVATION / ADDITION \$650,000 – \$1 MILLION

IN2CONSTRUCTION Tiff's Place

This sensitive restoration of a near-original 1970s home skillfully blends heritage and contemporary elements.

Meticulous care preserved original timber fabric, windows, cabinetry and structural details, complemented by subtle space adjustments & custom joinery. Timber surfaces are treated with oils and waxes to ensure durability while developing natural patina. Double-glazed timber windows significantly improve thermal efficiency. Integrated lighting honors the 1970s aesthetic.

Collaboration between client, architect and builder ensured careful scope and cost management without compromising quality. This project exemplifies craftsmanship, sustainability and subtle design.

DESIGNED BY: Studio Ilk
PHOTOGRAPHY: Anjie Blair
REGION: South
SPONSORED BY: Total Tools

DRIFTWOOD WORKSHOP Taroona House

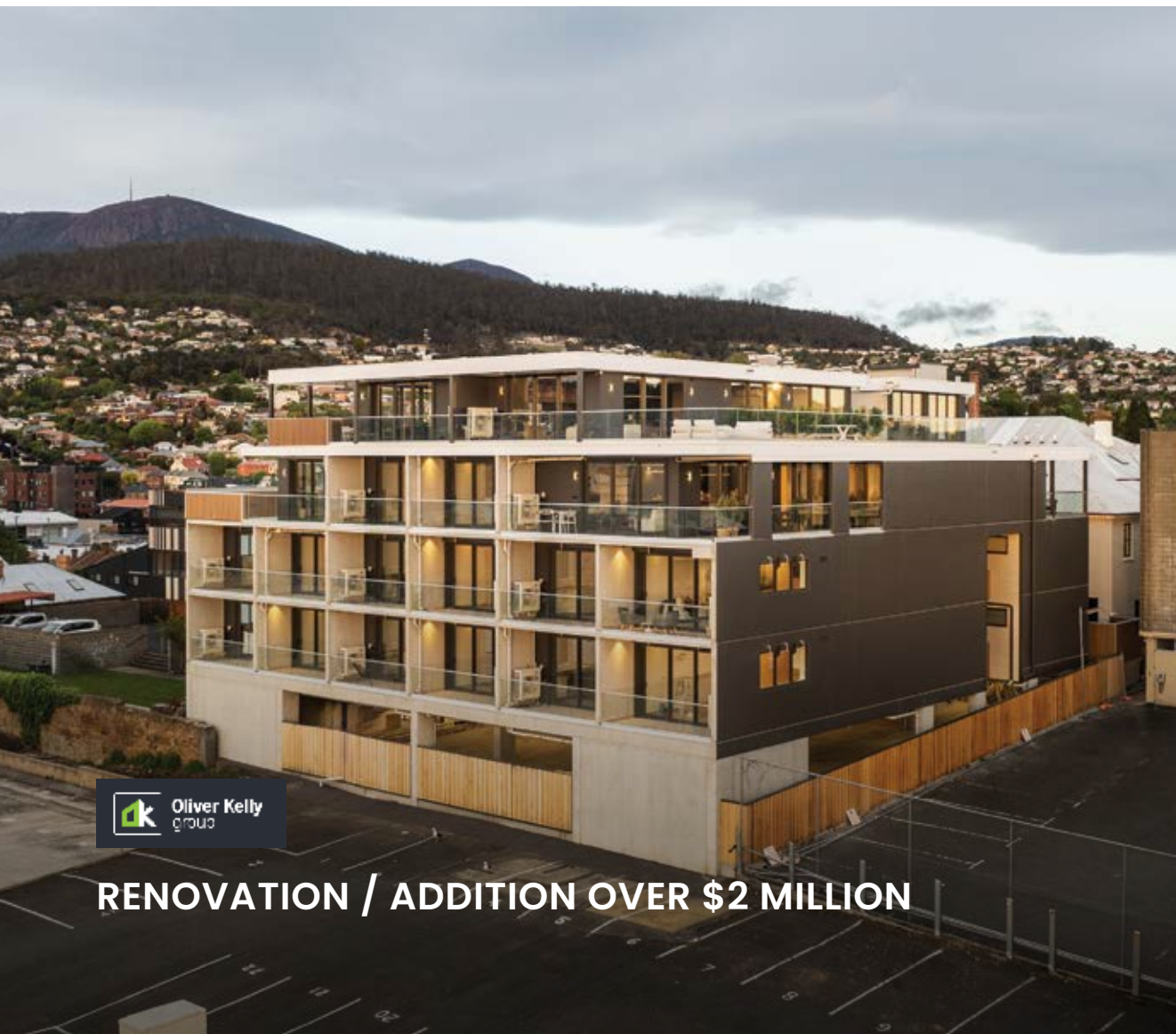
This project delivers a striking new wing to an existing heritage residence, featuring a large kitchen, butler's pantry, dining area, sunken lounge, gym and seamless integration with the pool courtyard & landscaping.

Challenged by a solid sandstone subground, excavated stone was repurposed for gabion retaining walls.

Externally, nailstrip cladding wraps walls and roof with concealed gutters and warm timber accents. Inside, a cathedral ceiling, polished concrete floors with hydronic heating, custom joiner and quality finishes create a light-filled, intimate space.

This addition exemplifies precise craftsmanship and collaborative excellence across all stakeholders.

DESIGNED BY: Eadesign
PHOTOGRAPHY: Rosie Hastie
REGION: South
SPONSORED BY: Clennett's Mitre 10



OLIVER KELLY GROUP Patrick Street

The Ingomar project on Patrick Street masterfully balances heritage restoration with contemporary design, revitalising a treasured 1897 Hobart mansion into eight meticulously restored heritage residences and 18 modern apartments within a sophisticated rear extension.

The development preserves the building's historic street presence while capitalising on views over the city & Derwent. Oliver Kelly Group overcame significant challenges, including foundation repairs and integrating modern services, demonstrating exceptional craftsmanship in restoring original trims, staircases, floors, and doors.

This project exemplifies sensitive adaptation of heritage stock for contemporary living, respecting the original character while delivering high-quality construction outcomes.

DESIGNED BY: S Group.
PHOTOGRAPHY: Mason Doherty
REGION: South
SPONSORSHIP: CSR

ANSTIE CONSTRUCTIONS Dill Pickle Club

Anstie Constructions' Dill Pickle Club is an exquisite gem of a fit-out.

It combines the work of multiple mastercraftspeople with a range of Tasmanian materials, particularly blackwood, to create a sumptuous, intimate and experiential space.

The owners' focus on excellence is ably supported by the built excellence that enables their endeavour.

This is a rare and wonderful exhibition of a builder's skill.

DESIGNED BY: Workshop Architecture

PHOTOGRAPHY: Matt Sanson

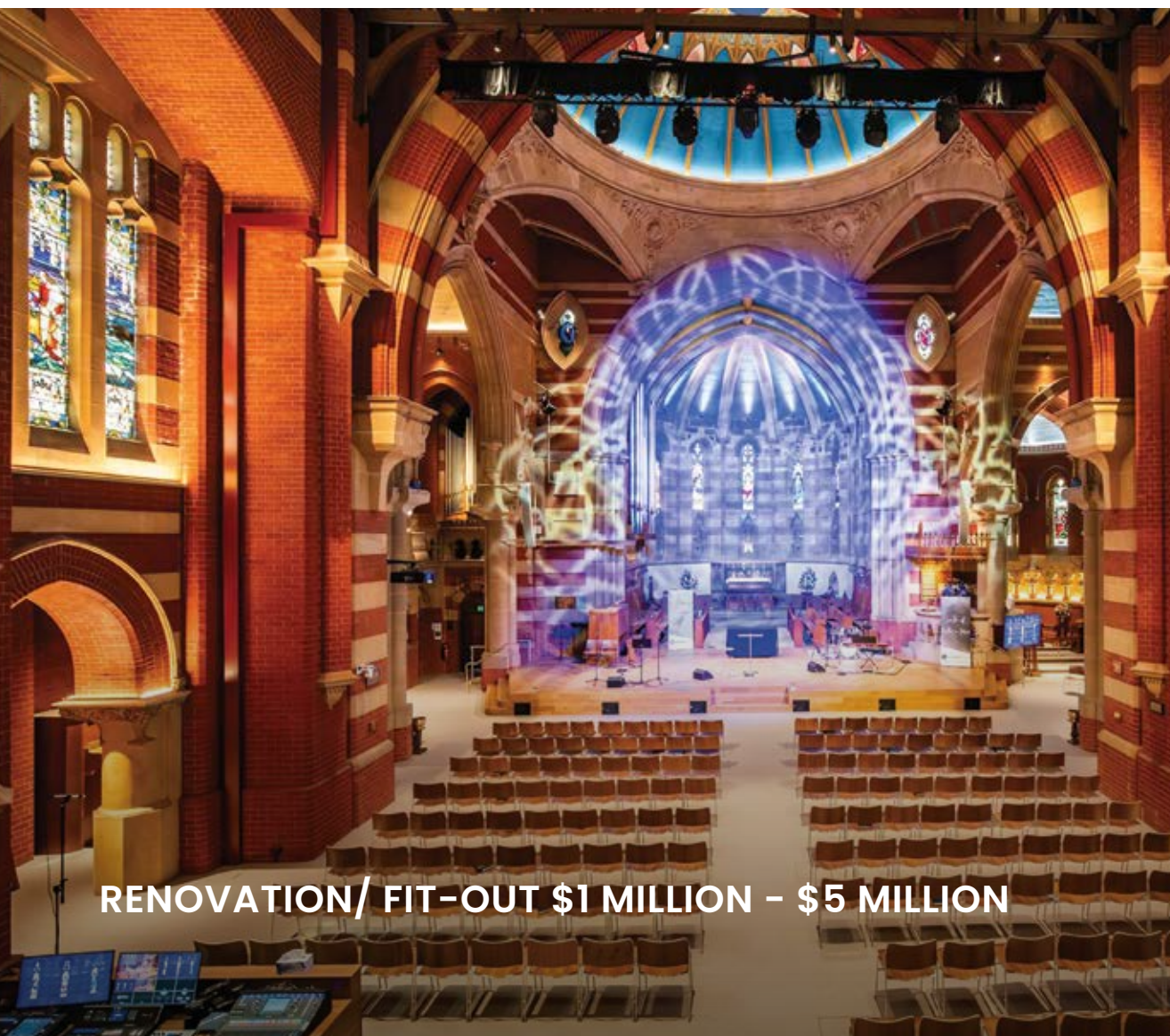
REGION: North

SPONSORED BY: Becks Mitre 10



ANSTIE
CONSTRUCTIONS

RENOVATION/ FIT-OUT UNDER \$1 MILLION



T-BUILT St John's Anglican

T-Built's St John's Anglican project is a showcase of the sensitive integration of new services into a heritage building.

The extensive intervention is not apparent in the completed project, which illustrates further the skill with which the works have been carried out.

There has also been an obvious focus on safety, with the project involving substantial work at considerable height.

It is a credit to the T-Built team that they have managed a modest investment in a difficult working environment to create a striking, technically sophisticated and transformative new space.

DESIGNED BY: Cumulus Studio

PHOTOGRAPHY: Tassie Visuals

REGION: North

SPONSORED BY: CSR

RENOVATION/ FIT-OUT \$1 MILLION - \$5 MILLION

HANSEN YUNCKEN
Philip Smith Centre

Hansen Yuncken has carried out extensive works to transform a deteriorating, outdated facility into a unique, flexible teaching and learning space.

Work has involved careful restoration of heritage fabric as well as the sensitive insertion of new elements to make the building fit for purpose, fully accessible and more energy efficient.

The integration of new and existing work has been carried out in exemplary fashion with a true focus on quality, and the completed project has been returned to the client as a vibrant educational and community asset.

DESIGNED BY: Lovell Chen
PHOTOGRAPHY: Rosie Hastie
REGION: South
SPONSORED BY: CBUS



HANSEN YUNCKEN
RENOVATION / FIT-OUT OVER \$10 MILLION

Meyer
TIMBER
Tasmania

CHEERS TO 20 YEARS

Helping you Build & Shape The Island



JDR HOMES Pardoe

This project exemplifies how standard construction methods can deliver a cost-effective, compact home without compromise.

Built behind an existing dwelling, the brick veneer-clad residence balances robustness with refined, functional interiors.

Despite logistical challenges of building on an occupied site and necessary infrastructure upgrades, the project was completed on time and within budget. Careful material selection and efficient fit-out reflect a commitment to quality and practicality.

This home stands as a testament to smart, efficient building practices, demonstrating that budget-conscious construction can successfully meet the demands of modern living.

DESIGNED BY: iDesign Residential
PHOTOGRAPHY: Tassie Visuals
REGION: North-West
SPONSORED BY: MBIB



JRD HOMES Tower Home

Tower Home is an outstanding example of thoughtful construction delivered on a modest budget.

Built primarily in brick veneer with feature weatherboard panelling, the home sits confidently on a sloping site, with integrated retaining walls creating a level platform for both indoor and outdoor living. Spacious and filled with natural light, the home features open-plan living areas that connect seamlessly to the outdoor deck. A refined neutral palette, chrome accents, and shaker cabinetry enhance the interior.

Completed on time and to a high standard, Tower Home showcases how quality building and careful attention to detail can achieve exceptional results on a budget.

DESIGNED BY: n + b design
PHOTOGRAPHY: Tassie Visuals
REGION: North-West
SPONSORED BY: Meyer Timber

JDR HOMES
Kae Close

This barn-style residence is expertly constructed to maximise space on a compact corner site.

The exterior combines spotted gum timber, brick veneer, and modern cladding, creating a striking architectural presence. Inside, light-filled spaces feature a solid Tasmanian Oak kitchen benchtop as a focal point.

Bathrooms balance elegance and functionality with floor-to-ceiling tiles and quality fixtures. A key feature is the raked ceiling in the kitchen and dining area, extending seamlessly to the alfresco, enhancing space, natural light, and outdoor connection.

This home exemplifies how quality building and thoughtful construction elevate residential living.

DESIGNED BY: iDesign Residential
PHOTOGRAPHY: Tassie Visuals
REGION: North-West
SPONSORED BY: Austral Bricks



JDR
HOMES

DWELLING CONSTRUCTION \$350,000 – \$500,000



FERGUSON
BUILDING SOLUTIONS
Shipwrights

Nestled on the edge of Carnarvon Bay, this solar-passive home by Ferguson Building Solutions exemplifies precision craftsmanship and functional design.

Combining concrete and timber, the home features polished concrete floors, flush Tasmanian oak door surrounds, and custom rose gum laminated timber doors fitted with zero-clearance cavity sliders. The white stringy bark cladding meets bushfire standards, while wide eaves and north-facing glazing optimise thermal performance. Despite challenging weather and a remote location, the build was completed on time.

This project stands as a testament to Ferguson Building Solutions skill, dedication, and commitment to delivering high-quality, high-performing homes.

DESIGNED BY: Hargreaves Design
PHOTOGRAPHY: Lewis Ferguson
REGION: South
SPONSORED BY: CBUS

DWELLING CONSTRUCTION \$500,000 – \$750,000

FORM PROJECTS Mountain House

This meticulously crafted one-bedroom residence exemplifies sustainable building, technical precision, and exceptional craftsmanship. Clad externally in detailed corten steel with a high Bushfire Attack Level rating, the home boasts superior thermal performance and airtightness.

Internally, a restrained palette of hardwood ply, solid brass, and cork flooring creates warmth and durability. Features include a sweeping undulating ply ceiling, custom brass pelmets, integrated lighting, and bespoke joinery—all executed with precision. Ethical material choices and construction processes reflect a strong ecological commitment.

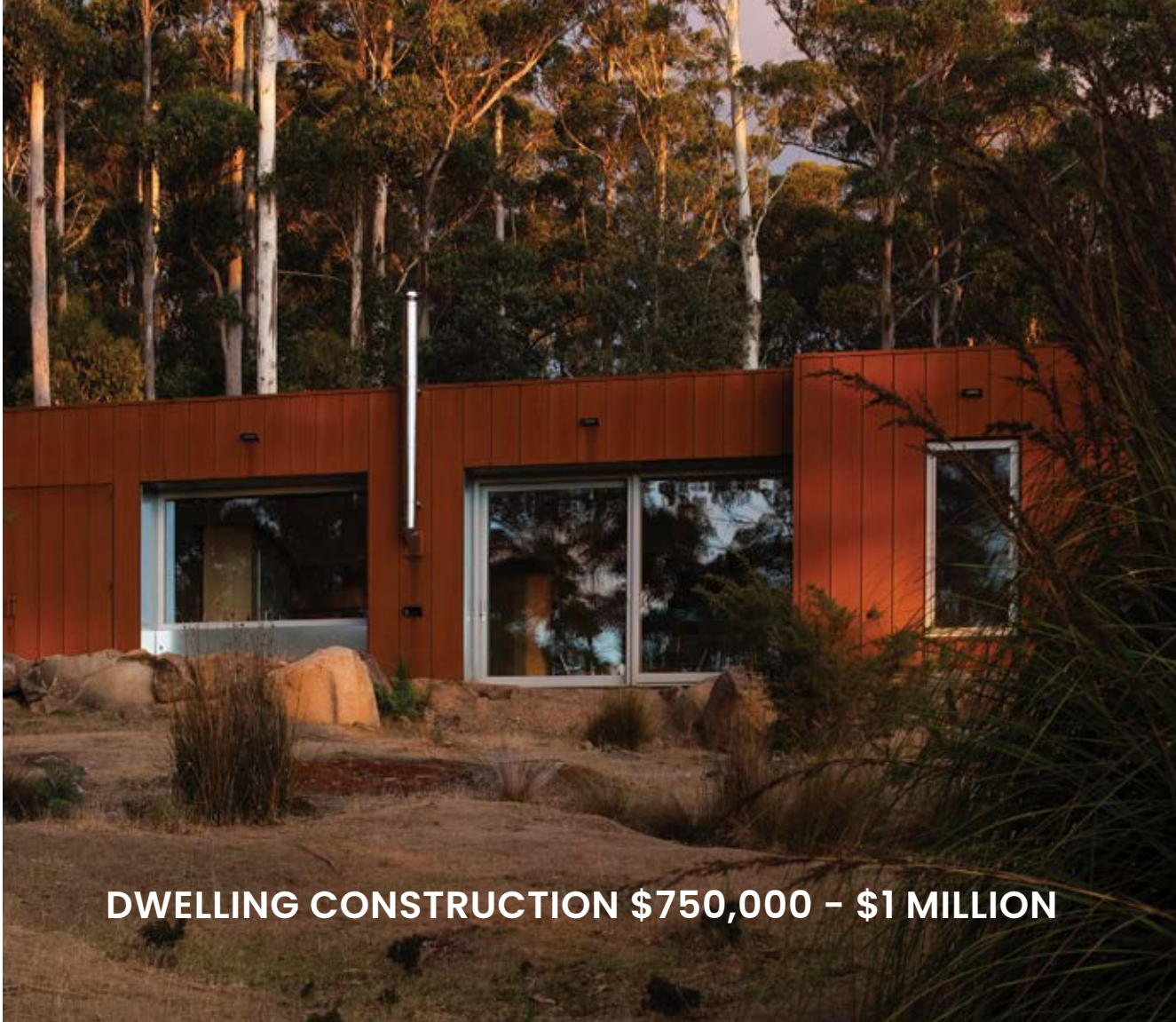
This project sets a new benchmark for bespoke residential construction through close collaboration and outstanding workmanship.

DESIGNED BY: Studio Steen

PHOTOGRAPHY: Anjie Blair

REGION: North

SPONSORED BY: Island Block & Paving



DWELLING CONSTRUCTION \$750,000 – \$1 MILLION



DWELLING CONSTRUCTION \$1 MILLION – \$2 MILLION

TC TAYLOR BUILDING 390 Project

Overlooking the Great Western Tiers near Deloraine, this exceptional 290m² custom residence by TC Taylor Building is a masterclass in craftsmanship, creativity, and regional character.

Anchored by a dramatic recycled brick wall, crafted from handmade bricks salvaged from a neighbouring milk factory, the home centres around a double-sided Cheminees fireplace atop a concrete plinth.

Featuring hydronically heated concrete floors, Tasmanian Oak joinery, and bespoke locally crafted elements, every detail has been meticulously considered.

With custom dog beds, sculptural bathrooms, and breathtaking views, this is a deeply personal and beautifully executed home that exemplifies quality regional building at its finest.

DESIGNED BY: My Build

PHOTOGRAPHY: Mieke Campbell

REGION: North-West

SPONSORED BY: TasBuild

BARWICK DEVELOPMENTS McEwans Project

McEwans Project is a remarkable showcase of refined craftsmanship and builder expertise on a challenging riverside site.

The exterior features over 8,500 linear metres of Shou Sugi Ban cladding complemented by 2,500 linear metres of spotted gum decking, creating a striking contrast with the natural setting. Inside, custom polished concrete floors, spotted gum and Tasmanian oak joinery, and granite and copper bench tops elevate the interiors. Advanced condensation control for the indoor pool and a tightly sealed envelope ensure energy efficiency.

Thoughtful site management and sustainability practices further highlight this project as a benchmark in quality residential construction.

DESIGNED BY: Cumulus Studio
PHOTOGRAPHY: Renee Hodskiss
REGION: North
SPONSORED BY: CSR



BARWICK

DWELLING CONSTRUCTION \$2 – \$4 MILLION



i2C
in2construction

DWELLING CONSTRUCTION OVER \$6 MILLION

IN2CONSTRUCTION Dunalley House

Realised through close collaboration with engineers and trades, Dunalley House is a testament to refined detailing, technical precision, and expert craftsmanship.

The build features over 450m² of suspended concrete slab, off-form concrete elements, and precast wall panels, requiring meticulous planning, a 200-tonne crane, and custom crane pads. Complex systems, from hydronic heating to a GPS-aligned steel roof, were rigorously executed. Challenging terrain and access demanded coordinated excavation and carefully scheduled pours.

Internally, waxed Tasmanian oak linings, engineered glass balustrades, and LED-lit timber staircases demonstrate exceptional finish. This project exemplifies the builder's skill in managing complexity and delivering architectural excellence with precision and care.

DESIGNED BY: DW+A
PHOTOGRAPHY: Andy Rasheed
REGION: South
SPONSORED BY: Bank of Us

HUTCHINSON BUILDERS

Pressing Matters Cellar Door

Despite the appearances offered by project images, Hutchinson Builders have delivered the Pressing Matters Cellar Door despite strong winds and heavy rainfall on an exposed, challenging and muddy site, and done so on time and under budget.

In doing so, it has maintained and strengthened a positive client relationship, and the excellence of the completed work is indicative of the builder's commitment to quality project delivery.

The building is a worthy addition to its growing suite of projects for this client on this site.

DESIGNED BY: BPSM Architects
PHOTOGRAPHY: Vitalii Tairov
REGION: South
SPONSORED BY: TasBuild



FAIRBROTHER CONSTRUCTION

One North Terrace

In an economic environment where the viable delivery of bespoke, quality, commercial projects by the private sector is ever more challenging, it is heartening to see this new project delivered to a high standard, despite the significant challenges of project cost, an adjoining cinema, adjacent housing, restricted access, limited laydown and protruding bedrock.

The efficient approaches adopted to manage these challenges demonstrate Fairbrother's skill, knowledge and application. Its commitment to this project has been complete, and the final result represents an outstanding collaborative achievement between the builder and client.

DESIGNED BY: ARTAS Architects
PHOTOGRAPHY: Jake Archer
REGION: North-West
SPONSORED BY: HRWS

ANSTIE CONSTRUCTIONS Small Wonder Winery Stage 1

Anstie Constructions' work at Small Wonder Winery has required an extraordinary attention to detail, with the architectural team demanding perfect alignment and a minimum of visible fixings and services, with many bespoke details requiring builder input to establish how they could be achieved.

The fact that exacting design requirements have been faithfully implemented is an enormous credit to the builder.

The success of the finished project, constructed to an uncompromisingly high standard, reflects the skill with which it has been completed, all while meeting budget and program requirements.

DESIGNED BY: Edwards + Simpson
& Kerry Hill Architects
PHOTOGRAPHY: Oscar Sloane
REGION: North
SPONSORED BY: Austral Bricks



NEW CONSTRUCTION \$10 MILLION – \$20 MILLION



NEW CONSTRUCTION \$20 MILLION – \$50 MILLION

VOS CONSTRUCTION & JOINERY United Agewell Strathaven

Vos Construction & Joinery has executed an exemplary "quiet achiever" with United Agewell Strathaven.

The work is not flashy, nor publicly prominent, but the focus on quality is of the highest order nonetheless.

From early involvement in resolving asbestos ground contamination, through value management, to a focus on construction excellence, the builder has been proactive and contributory.

This has resulted in work of the highest quality and a strengthened relationship with a valuable client.

Even without acknowledging the construction challenges faced in its delivery, this is an outstanding project.

DESIGNED BY: Marchese Partners
PHOTOGRAPHY: Matthew Bissett
REGION: South
SPONSORED BY: Cement Australia

**FAIRBROTHER
CONSTRUCTION
UTAS Willis Street**

Fairbrother's UTAS Willis Street is a standout project in this year's Awards program. Its construction encompassed aspirational sustainability targets, challenging technical requirements and tricky site conditions.

Challenges were backstopped by a GMP contract, making the financial sustainability of the project a vital consideration as well.

Fairbrother has accepted these challenges and delivered on its promise.

The result is exemplary and provides a vital educational asset for the client while also making a meaningful contribution to reduced carbon emissions. It is a fitting winner of this Award.

DESIGNED BY: Wardle
PHOTOGRAPHY: Rob Burnett
REGION: North
SPONSORED BY: Island Block & Paving



BECKS MITRE 10

Becks Mitre 10 strength and credibility within the building industry comes from over 100 years of generational expertise and customer reliability. Builders trust our dedication to supply quality materials from foundation to fit out.

Visit your local Becks Mitre 10 Trade Centre and talk to our Trade Account Managers, we'll help you get it done and deliver on site, on time and in full.



FOR ALL YOUR TRADE NEEDS

High COMMENDATION



DWELLING CONSTRUCTION
\$750,000 - \$1 MILLION
Nick Elliot - Ithaca



DWELLING CONSTRUCTION
\$1 MILLION - \$2 MILLION
Mead Con - Port Residence

MC

MEADCON
BUILDING AND
CONSTRUCTION



RENOVATION / ADDITION
\$650,000 - \$1 MILLION
JPO - Leith Residence

JPO
BUILDING CONTRACTORS



NEW CONSTRUCTION
\$5 MILLION - \$10 MILLION
VOS - Saltbush Child & Learning

VOS



NEW CONSTRUCTION
\$10 MILLION - \$20 MILLION
VOS - Burnie Ambulance

VOS



NEW CONSTRUCTION
\$20 MILLION - \$50 MILLION
VOS - Legana Primary School

VOS



NEW CONSTRUCTION
OVER \$50 MILLION
Hutchinson - Double Tree

HUTCHINSON
BUILDERS
Established 1912

High COMMENDATION



CIVIL
CONSTRUCTION
Oliver Kelly - West Dam



MEDIUM DENSITY
\$2 MILLION - \$5 MILLION
Fairbrother Construction - Castray



MEDIUM DENSITY
OVER - \$5 MILLION
Fairbrother Construction - Letitia



EDUCATION
FACILITY
VOS - St Virgils College



HEALTH FACILITY
VOS - Burnie Ambulance
Super Station



SPECIALIST
CONTRACTOR
A2 Kitchens & Joinery - Dill Pickle



BEST USE OF AUSTRALIAN MADE
PRODUCTS - COMMERCIAL
Anstie Constructions - Dill Pickle



National WINNERS 2024

National Sustainability – Residential Davies Construction (Tas) Pty Ltd Butterfly Effect Studio

This sustainable project boasts a compact footprint and a highly efficient building envelope that minimizes heating needs. It incorporates trombe walls and high thermal mass for heat generation and storage. The studio generates its own energy, with surplus electricity feeding back to the grid. All building systems, equipment, materials, and finishes were chosen for durability, low maintenance, and eco-friendliness.

DAVIES

DESIGNER:
Green Design Architects
PHOTOGRAPHER:
Aaron Jones
REGION: North West



National Sustainability – Commercial Fairbrother Construction – UTAS River's Edge

Early contractor involvement and blue sky thinking Fairbrother has been able to help achieve a reduction of over 32% in embodied carbon compared with typical construction. Strategies employed span from recycling steel gas pipe for driven piles and a reduction in applied finishes to extensive use of locally-sourced timber, carbon neutral bricks and environmentally responsible materials.

DESIGNER: John Wardle Architects
PHOTOGRAPHER: Dave Groves Photography
REGION: North



National Contract Home under \$350,000 JDR Homes – Tower Place

Tower Place by JDR Homes is beautifully built and proves that with quality workmanship and trusted techniques outstanding results can be achieved at relatively low cost.

DESIGNER: n+b design
PHOTOGRAPHER: Tassie Visuals
REGION: North West



2025 Finalists

Bathroom Project

Cunic Homes – Indy’s Cottage by Cunic Homes
Cunic Homes – The Hill by Cunic Homes
Drew Projects – Begonia
Ben Allen Building – Lanena Master Bathroom
Barwick Developments – McEwans – Bathroom
Barwick Developments – McEwans – Ensuite
One Take Builders – Ruby Bathroom + Water Closet

Best Use of Australian Made Products – Commercial

Anstie Constructions (Tas) Pty Ltd – Dill Pickle Club
Fairbrother Construction – UTAS Willis Street

Best Use of Australian Made Products – Residential

Ferguson Building Solutions – Shipwrights
Barwick Developments – McEwans Project

Civil Construction

Oliver Kelly Group – West Queen Dam
Mead Con – Veolia Spreyton

Display Home Under \$400k – 600k

Cunic Homes – The Woodland

Display Home Under \$600k – 800k

Platinum Pro Construction – Sheffield Barnhouse
Wilson Homes – Clearwater 32 Prospect Vale
Country Club

Display Home – Over \$800k

Elite Construction Tas Pty Ltd – Diamond Shores
Wilson Homes – Riverton 27 – Prospect Vale
Country Club
JOSCON Tasmania – The Mary

Dwelling Construction Under \$200k

T-Built – Gosling
JDR Homes – Pardoe

Dwelling Construction \$200k – \$350k

Platinum Pro Construction – East Hampton
JDR Homes – Tower Home
CBC Custom Building PTY LTD – Mountain River

Dwelling Construction \$350k – \$500k

Cunic Homes – The Olive by Cunic Homes
Platinum Pro Construction – Braddons Home
JA Building and Construction Pty Ltd – Parkside Villas
JDR Homes – Kae Close
JDR Homes – KC Close

Dwelling Construction \$500k – \$750k

JPO Building Contractors Pty Ltd – Sheoak

Ferguson Building Solutions – Shipwrights
JOSCON Tasmania – Magic Midway
Laing Homes Pty Ltd – Sankey

Dwelling Construction \$750k – \$1 Million

JOSCON Tasmania – The Merewyn
Nicholas Elliott Building – Ithaca
Form Projects – Mountain House
Laing Homes Pty Ltd – Bushland
Elite Construction Tas Pty Ltd – The Yard

Dwelling Construction \$1 Million – \$2 Million

In2Construction Services – Mountain River House
Mead Con – Port Residence
T-Built – Pateena Project
Monson Construction – Bushell Residence
Ben Allen Building – Lanana
Mead Con – Poppy Residence
TC Taylor Building – 390 Project
Modern Homes – Quambatook
Elite Construction Tas Pty Ltd – Windy Ridge

Dwelling Construction \$2 Million – \$4 Million

Barwick Developments – McEwans Project

Dwelling Construction Over \$6 Million

In2Construction Services – Dunalley House

Education Facility

Vos Construction & Joinery – Legana Primary School
Vos Construction & Joinery – St Virgils College
Year 11 & 12 Upgrade
Enhanced Construction Tasmania – John Paul II Library Re-development
Fairbrother Construction – UTAS Willis Street

Entertainment and Recreation Facility

T-Built – St John’s Anglican

Health Facility

Vos Construction & Joinery – Launceston General Hospital Helipad
Vos Construction & Joinery – Burnie Ambulance Super Station
Fairbrother Construction – Glenson Place

Restoration / Renovation – Heritage Listed or Period Building –Residential

Cunic Homes – Indy’s Cottage by Cunic Homes
In2Construction Services – Workman’s Cottage & Extension
Oliver Kelly Group – Patrick Street
Burleigh & Dean Constructions – Claremont Oak Estate

Restoration / Renovation – Heritage Listed or Period Building – Commercial

Hansen Yuncken – Philip Smith Centre

Kitchen Project

Ferguson Building Solutions – Shipwrights – Kitchen
Cunic Homes – Indy’s cottage – Kitchen
Cunic Homes – The Woodland by Cunic Homes – Kitchen
Cunic Homes – The Jade by Cunic Homes – Kitchen
Drew Projects – Begonia
Barwick Developments – McEwans Project
A2 Kitchens & Joinery – Black Lane
A2 Kitchens & Joinery – Quoin Farm

Lifestyle Housing for Seniors

Cunic Homes – North West Bay Estate – Lifestyle Housing for Seniors

Medium Density Construction 2-5 dwellings

Cunic Homes – The Hill by Cunic Homes
Form Projects – Workers Cottages
Ben Allen Building – Murray Development
JDR Homes – Hearps Homes
Fairbrother Construction – Castray Luxury Apartments

Medium Density Construction over 5 dwellings

Cunic Homes – South Line Development by Cunic Homes
Oliver Kelly Group – Breheny Project
Fairbrother – Letitia Street Housing

New Construction \$2 Million – \$5 Million

Hutchinson Builders – Pressing Matters Cellar Door

New Construction \$5 Million – \$10 Million

Vos Construction & Joinery – Saltbush Child and Family Learning Centre
Fairbrother Construction – One North Terrace

New Construction \$10 Million – \$20 Million

Vos Construction & Joinery – Launceston General Hospital Helipad
Vos Construction & Joinery – Burnie Ambulance Super Station
Hansen Yuncken – Glenorchy Ambulance Station
Anstie Constructions (Tas) Pty Ltd – Small Wonder Winery – Stage 1
Fairbrother Construction – Glenson Place

2025 Finalists

New Construction \$20 Million – \$50 Million

Vos Construction & Joinery – United AgeWell
Strathaven
Fairbrother – St Lukes Health
Vos Construction & Joinery – Legana Primary
School

New Construction Over \$50 Million

Hutchinson Builders – DoubleTree by Hilton
Hobart
Fairbrother Construction – UTAS Willis Street

Renovation / Addition Under \$200k

Drew Projects – Begonia

Renovation / Addition \$200k – \$400k

Taylormade Building Solutions – Bellerive
Extension
T-Built – Hepher Garage
T-Built – Allford Renovation
Jamieson Edwards – Cliff House
TC Taylor Building – Adina
Barwick Developments – Leslie Residence

Renovation / Addition \$400k– \$650k

Allen Built – Workers Cottage Addition
CBC Custom Building PTY LTD – Hakea
NW Concepts – River Reno

Renovation / Addition \$650k– \$1 Million

JPO Building Contractors Pty Ltd – Leith
Residence
In2Construction Services – Tiff's Place
Cunic Homes – Indy's Cottage by Cunic Homes

Renovation / Addition \$1 Million – \$2 Million

Driftwood Workshop – Taroona House

Renovation / Addition Over \$2 Million

Oliver Kelly Group – Patrick Street

Renovation / Fit-out Under \$1 Million

Vos Construction & Joinery – Lululemon Hobart
Anstie Constructions (Tas) Pty Ltd – Dill Pickle
Club

Renovation/ Fit-out \$1 Million – \$5 Million

Vos Construction & Joinery – Rebel Sport
Launceston
Fairbrother Construction – Sullivans Cove
Vos Construction & Joinery – State Library
Ground Floor Redevelopment
T-Built – St John's Anglican

Renovation/ Fit-out Over \$10 Million

Hansen Yuncken – Philip Smith Centre

Small Builder of the Year

In2Construction Services
T-Built
Barwick Developments
CBC Custom Building PTY LTD

Soil & Water Management – Residential

Barwick Developments – McEwans Project

Soil & Water Management – Commercial

Hutchinson Builders – Project Mercury – Hobart
Airport Terminal Expansion
Fairbrother Construction – UTAS Willis Street

Spec Home

JOSCON Tasmania – The Donald
Modern Homes – Waverly Heights

Specialist Contractor of the Year

A2 Kitchens & Joinery – Dill Pickle Club
Fairbrother Joinery – UTAS Willis Street Joinery

State Apprentice of the Year

Vos Construction & Joinery – Ryan Geale
Vos Construction & Joinery – Daniel Finearty
Jamieson Edwards – George McShane
Oliver Kelly Group – Kyah Martin
Stubbs Constructions – Jordan Stead
AJR Construct – Kurt Walters
CBC Custom Building PTY LTD – Nate Gaze
Fairbrother Construction – Sam Walley

Sustainability – Residential

Form Projects – Mountain House

Sustainability – Commercial

Fairbrother Construction – UTAS Willis Street

Unique Space

Dan Bush Building Co – Sauna Boat Tasmania
Elite Construction Tas Pty Ltd – Games Room

Work Health and Safety – Commercial

Vos Construction & Joinery – Launceston
General Hospital Helipad
Fairbrother Construction – Queens Walk

Young Builder of the Year

Damian Taylor – Taylormade Building Solutions
Josh Rowe – JRD Homes
Daniel Iles – Elite Construction Tas



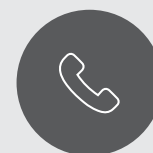
A not-for-profit organisation established in 1891, Master Builders Tasmania is the preeminent building industry organisation in Tasmania.

With three offices throughout Tasmania and representing over 650 business members, Master Builders works together with all sectors of the building and construction industry.

We offer expert advice and specialist services to support you in your everyday business challenges and exclusive member benefits.

Whether you're a builder, tradesperson, sub-contractor or product supplier, our dedicated industry specialists have the expertise to help you.

Take a moment to discover all the ways that a membership can work for you.



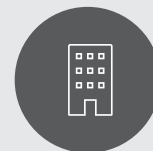
Receive advice and support



Save time and money



Find insurance coverage



Industry-based training



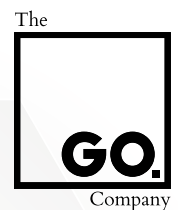
Trade suppliers



Member benefits

mbatas.org.au

THANK YOU *To* OUR SPONSORS



BUILDING and CONSTRUCTION SPECIALISTS

expert legal advice

Hobart | Launceston | Kingston | Devonport | Smithton

simmons
WOLFHAGEN
LAWYERS



Simmons Wolfhagen has the right legal expertise for commercial developments, civil works and home building projects.

We provide practical, cost efficient and transparent advice on your rights, obligations and will advise a clear strategy to resolve even the most complex issues quickly.

Our consultative and advisory services can assist claimants and respondents with any legal issue including contract drafting and review, dispute resolution and a range of adjacent specialities – such as planning, property, environment and WHS.

With offices statewide, Simmons Wolfhagen are well positioned to provide your business with expert legal advice.

Need expert building and construction legal advice?
Contact Simmons Wolfhagen first.



Hobart

+ 61 3 6226 1200
Level 4
99 Bathurst Street
HOBART TAS 7000

Launceston

+ 61 3 6338 2390
45 Cameron Street
LAUNCESTON TAS 7250

Kingston

+ 61 3 6226 1200
Level 1
Channel Court
KINGSTON TAS 7050

Devonport

+ 61 3 6424 4633
20 Rooke Street
DEVONPORT TAS 7310

Smithton

+ 61 3 6452 1861
24 King Street
SMITHTON TAS 7330

SOUTHERN REGION

6 Lockheed Pl, Cambridge, TAS 7170
03 6210 2000
headoffice@mbatas.org.au

NORTHERN REGION

30 Gleadow St, Launceston TAS 7250

NORTH WEST REGION

41 Steele St, Devonport TAS 7310



mbatas.org.au



BUILDING AWARD WINNING HOMES *since 1891*



MASTER BUILDERS
TASMANIA