



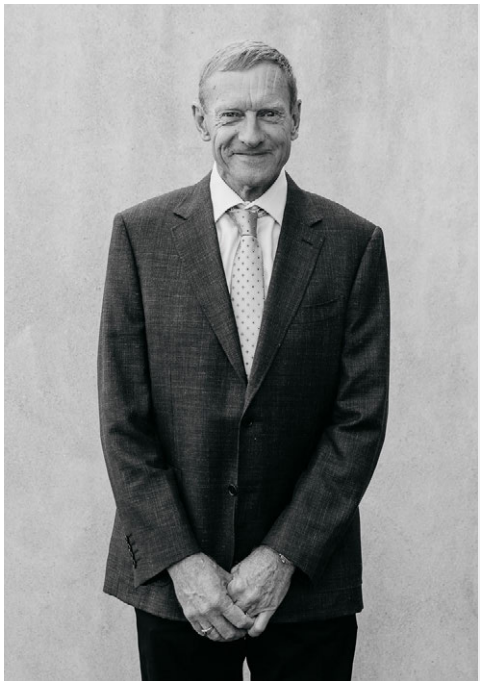
# 2022

## AWARDS *for* EXCELLENCE

*finalists*







**Tony Streefland**  
President  
Master Builders Tasmania

## A Message from Tony Streefland

Reflecting on the past year I believe it's fair to say that generally the building industry, and associated trades, have once again put in a tough year. After the past few years' struggles with availability of tradespeople, sub-contractors, and the ongoing supply chain issues, many thought that the toughest period was behind us; however, we are now facing ongoing interest rate increases, and other associated cost increases, which make quoting on new projects a very difficult task.

Despite the fluctuating circumstances our industry finds itself in, Master Builders' members, and their teams, have once again excelled, as can be seen

by the calibre of award entries received this year. Both private and Government investment in our sector has and will continue to push our industry to a volume of projects not previously seen; and will give confidence to Master Builders' members to continue investing in apprentices, which are the future of our industry. It's our members drive, skill, and determination to push the boundaries that is helping to ensure the continued success and viability in both the residential and commercial sectors into the future.

There are many elements to making these awards the success that they are. Stunning renovations and beautiful homes, to important education and

healthcare facilities, tourism, and community projects, which have again been put forward for judging this year. From the achievement of apprentices, trade contractors, the small family businesses, to the largest commercial builders, each and every individual working on these projects leaves their personal mark on them in some way.

On behalf of the Board, I congratulate tonight's entrants, finalists, and winners. Whether a winner or not, your craftsmanship is a credit to you, and you should all be proud of your achievements. There is nothing a Master Builder can't accomplish!

## A Message from Denita Wawn

Master Builders Tasmania's Excellence in Building and Construction Awards are always a showcase of skill, innovation, and continuous improvement. The Awards celebrate outstanding projects across the residential, commercial, and civil construction sectors and the achievements of the people and businesses responsible for their construction.

Whether it's affordable display homes, custom built contract homes, complex commercial and industrial projects, sustainable buildings, projects constructed in remote and challenging locations or civil infrastructure projects of the highest quality, Tasmania's

Master Builders are more than equal to the challenge. In fact, they are the exemplars of our industry.

So, congratulations to all the Finalists in Tasmania's 2022 Excellence Awards. I am looking forward to seeing the best that my home state has to offer later this year at the National Excellence in Building & Construction Awards this November 24-26 in the Hunter Valley. Ticket sales are now open on [our website](#).



**Denita Wawn**  
CEO  
Master Builders Australia



**Matthew Pollock**  
CEO  
Master Builders Tasmania

## A Message from Matthew Pollock

With the worst of the pandemic behind us the outlook for 2022 was bright. A healthy pipeline of work and hope that a return to normal would ease pressure on business meant confidence was up. Business sentiment surveys in Mid 2021 support this position.

That confidence turned quickly to concerns as supply pressures that were symptoms of the covid years turned out to be deeper and more protracted than anticipated. 2022 was, in a lot of ways, a year full of promise but short on prosperity. It had its casualties. Stories of business failures were an all-too-common feature of the reporting on the construction industry. We saw member businesses fail as supply pressures eroded margins, creating some of the most challenging business conditions for many years.

For these reasons this year's awards are more than just a

showcase of the best workmanship our industry has to offer. They are an example of our collective resilience through adversity. They show a commitment to the highest standards in the most challenging of circumstances.

The projects you will see in this Finalist Guide have helped rebuild our economy and have kept the wonderful people in our industry working. They are a demonstration of excellence from all sectors of our great industry, from infrastructure projects which push the boundaries of engineering and design, to houses that turn Tasmanians' dreams into reality.

In recent years Master Builders' Tasmania members have shone on the national stage, taking home more than our fair share of national awards. The quality of projects on display this year are a tribute to this legacy. We will be strongly represented in the Hunter

Valley in November.

Year after year we punch above our weight, whether through our workmanship on display on the national stage or through our contribution to keeping our state one of the best places to live in the world.

Master Builders congratulates all the finalists. Whether a winner on the night or not, all should be proud of the amazing projects you have delivered in the most testing of times. Master Builders members produce the very best our industry has to offer, year after year. This year is no different.

Thank you for your support of the Association over the past 12 months and I wish all finalists the best of luck on the night!





## State Apprentice of the Year



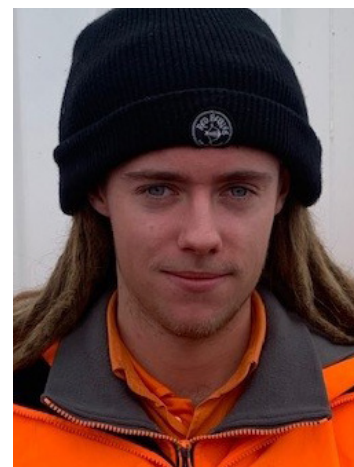
**Curtis Brazendale**  
Marcol Construction



**Zac Smith**  
Vos Construction  
& Joinery



**Jimmy Pitcher**  
AJR Construct



**Nixon Whitney**  
Fairbrother  
Construction



**Mitchell Suleau**  
Stubbs Constructions  
Pty Ltd

## Young Builder of the Year



**Marcus Delaney**  
Delaney & Co



**Brad Goodwin**  
CBC Custom Building

## Training master builders of the future

Nurturing today's apprentices so they can become master builders of the future is our passion.

Our teachers deliver high quality and industry-relevant training that can be held where and when it suits your business: on-the-job, off-the-job (at one of our campuses across Tasmania) or a combination of both, customised to suit your needs. We deliver nationally recognised qualifications and also specialise in safety and compliance courses.

Proudly  
supporting the  
Master Builders  
Tasmania Awards  
for Excellence

1300 655 307  
[www.tastafe.tas.edu.au](http://www.tastafe.tas.edu.au)  
RTO 60142 | CRICOS 03041M





## New Construction

Under \$1 Million



**Beardwood**  
Croagh Patrick Change Rooms

**Designed by:** CMK Architects  
**Photo by:** Anjie Blair  
**Region:** North



**Fairbrother Construction**  
Tasmanian eSchool

**Designed by:** Robert Carroll & Associates  
**Photo by:** Dave Groves  
**Region:** North

## New Construction

\$1 - \$2 Million



**Fairbrother Construction**  
Fieldwick Warehouse

**Designed by:** 6ty  
**Photo by:** Dave Groves  
**Region:** North



**Mead Con**  
Spreyton Primary Kindergarten

**Designed by:** Philp Lighton Architects  
**Photo by:** Rob Burnett  
**Region:** North-West



**Vos Construction & Joinery**  
Steele St GP Clinic

**Designed by:** Lachlan Walsh Design  
**Photo by:** Rob Burnett  
**Region:** North-West



**Mead Con**  
Shree Family Dental Practice

**Designed by:** S. Group  
**Photo by:** Simon Sturzaker  
**Region:** North-West

## New Construction

\$2 - \$5 Million



**Hansen Yuncken**  
Cascades Female Factory History & Interpretation Centre

**Designed by:** MCA Architects  
**Photo by:** Rosie Hastie  
**Region:** South



**Stubbs Constructions Pty Ltd**  
Agritas Trade College – Duck River Pavilion Stage 1

**Designed by:** Peter Poke Design  
**Photo by:** Graham King  
**Region:** North-West

## New Construction

\$2 - \$5 Million (continued)



**Fairbrother Construction**  
St Cuthbert's Catholic School

**Designed by:** Morrison & Breytenbach Architects  
**Photo by:** Barefoot Photographer José Navarro  
**Region:** South



**Vos Construction & Joinery**  
Southern Support School – Stage 1 Childcare Centre

**Designed by:** M2a  
**Photo by:** Rob Burnett  
**Region:** South



**Dillon Builders**  
Spring Bay Mill – New Accommodation: Ridge Shacks & Glamping Field

**Designed by:** Gilby & Brewin Architecture  
**Photo by:** Louise Dillon  
**Region:** South

## New Construction

\$5 - \$10 Million



**Fairbrother Construction**  
The Hutchins School

**Designed by:** HBV Architects  
**Photo by:** David Dickson  
**Region:** South



**Vos Construction & Joinery**  
The Rox Apartments

**Designed by:** Core Collective  
**Photo by:** Rob Burnett  
**Region:** South



**Vos Construction & Joinery**  
Longford Police Station

**Designed by:** HBV Architects  
**Photo by:** Rob Burnett  
**Region:** North





## New Construction

\$10 - \$20 Million



**Hutchinson Builders**  
Hobart Showgrounds Retail Centre

**Designed by:** Michael Carr Architects  
**Photo by:** Adam Gibson  
**Region:** South

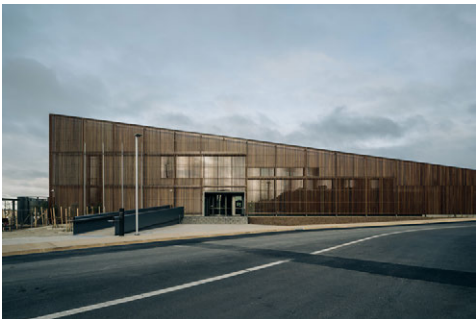


**Fairbrother Construction**  
Ulverstone Cultural Precinct

**Designed by:** Artas Architects Launceston  
**Photo by:** Rob Burnett  
**Region:** North-West

## New Construction

\$20 - \$50 Million



**Fairbrother Construction**  
UTAS Cradle Coast Campus

**Designed by:** John Wardle Architects  
**Photo by:** Adam Gibson  
**Region:** North West



**Vos Construction & Joinery**  
My State Bank Arena

**Designed by:** Philp Lighton Architects  
**Photo by:** Rob Burnett  
**Region:** South

## New Construction

\$20 - \$50 Million (continued)



**Vos Construction & Joinery**  
UTAS Library

**Designed by:** John Wardle Architects  
**Photo by:** Rob Burnett  
**Region:** North

## New Construction

Over \$50 Million



**Vos Construction & Joinery**  
Parliament Square

**Designed by:** FJMT Studio  
**Photo by:** Rob Burnett  
**Region:** South

**BRICKWORKS**

## Go Carbon Neutral with Brickworks

Announcing our new Climate Active certification

**Make your next project carbon neutral**

We invite you to apply for complimentary carbon offsets across our Australian-made range of clay bricks and pavers. Complete your application at [brickworks.com.au/climateactive](https://brickworks.com.au/climateactive)

LEARN MORE AT

[brickworks.com.au/climateactive](https://brickworks.com.au/climateactive)



A proud member of the Climate Active Network



**PARR'S**

**HEAT PUMP & REFRIGERATION CENTRE**

**Heating & cooling solutions for your home!**

**Energy efficient Heat Pumps!**



*Making your life comfortable!*



41 Lampton Avenue, Derwent Park | **6273 1577** | [parrair.com.au](https://parrair.com.au)





# BUILDERS CLEANS

SUMMIT CLEAN are at the pinnacle of professional cleaning with a particular focus on **BUILDERS CLEANS**. We are reliable, innovative and provide an unrivalled quality of service.



**QUICK**

Deadlines can be tight. We will complete any residential builders clean in one day.



**FLEXIBLE**

When things go wrong - just give us 24 hours notice and we can change the date without any fees.



**EASY BOOKING**

Get a quote and book on our website. Or call us on 1300 234 821.



CALL 1300 234 821

SUMMITCLEAN.COM.AU

10 Master Builders Tasmania • 2022 Awards for Excellence • Finalists

## Medium Density Construction

2 - 5 dwellings

**Hutchinson Builders**  
Church Street Townhouses

**Designed by:** Josh Crossin, LXN Architecture & Consulting  
**Photo by:** Adam Gibson  
**Region:** South

## Medium Density Construction

Over 5 dwellings

**Beardwood**  
The Oakdowns

**Designed by:** Starbox Architecture  
**Photo by:** Aaron Jones  
**Region:** South

**HiVis Building Services**  
Romilly St

**Designed by:** Lachlan Walsh Design  
**Photo by:** Dan Zygmant  
**Region:** South

**Beardwood**  
Red Hot Lofts

**Designed by:** S. Group  
**Photo by:** Simon Sturzaker  
**Region:** North West

MBT would like to thank Salamanca Inn for being the cocktail sponsor of our Awards.



**SALAMANCA INN**  
ALL SUITE HOTEL

**Beardwood**  
St Mark's Development

**Designed by:** CMK Architects  
**Photo by:** Simon Sturzaker  
**Region:** North

**Beardwood**  
The David

**Designed by:** Starbox Architecture  
**Photo by:** Jeremy Scott  
**Region:** North West

**Oliver Kelly Group**  
Mary's Hope Road

**Designed by:** Starbox Architecture  
**Photo by:** Adam Gibson  
**Region:** South

Master Builders Tasmania • 2022 Awards for Excellence • Finalists 11



## Renovation / Addition

Under \$200,000



**Jamieson Edwards Builders**  
Project Worley

**Designed by:** CBM Sustainability Group  
**Photo by:** Rosie Hastie  
**Region:** South



**Mead Con**  
South Road Extension

**Designed by:** Alan Lawler  
**Photo by:** Simon Sturzaker  
**Region:** North West

## Renovation / Addition

\$200,000 - \$400,000



**Eiszele Construction**  
Lansdowne

**Designed by:** McCarthy Reed Architects  
**Photo by:** Jeremy Button  
**Region:** South



**Burleigh & Dean Constructions Pty Ltd**  
High Street Residence

**Designed by:** Adams Building Design  
**Photo by:** Sarah Rhodes  
**Region:** North

## Renovation / Addition

\$400,000 - \$650,000



**JA Building & Construction Pty Ltd**  
Rattray Residence

**Designed by:** Apogee Designs  
**Photo by:** Cameron Jones  
**Region:** North



**Aspect Building Solutions**  
Mt Rumney Renovation

**Designed by:** JAWS Architecture  
**Photo by:** Adam Gibson  
**Region:** South



**My Build Collective**  
Erina Street

**Designed by:** My Build Collective  
**Photo by:** Melanie de Ruyter  
**Region:** North

## Restoration / Renovation

Heritage Listed or Period Building – Residential



**Mick King Contracting**  
Hiller Street

**Designed by:** Philp Lighton Architects  
**Photo by:** Angela Nicolle  
**Region:** North West



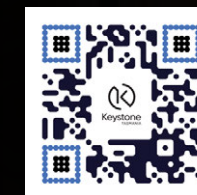
Keystone Tasmania is proud to sponsor the following awards at the Master Builders Tasmania 2022 Awards for Excellence:

Heritage-listed or Period Building Restoration/ Renovation – Commercial

New Construction \$20-\$50 million

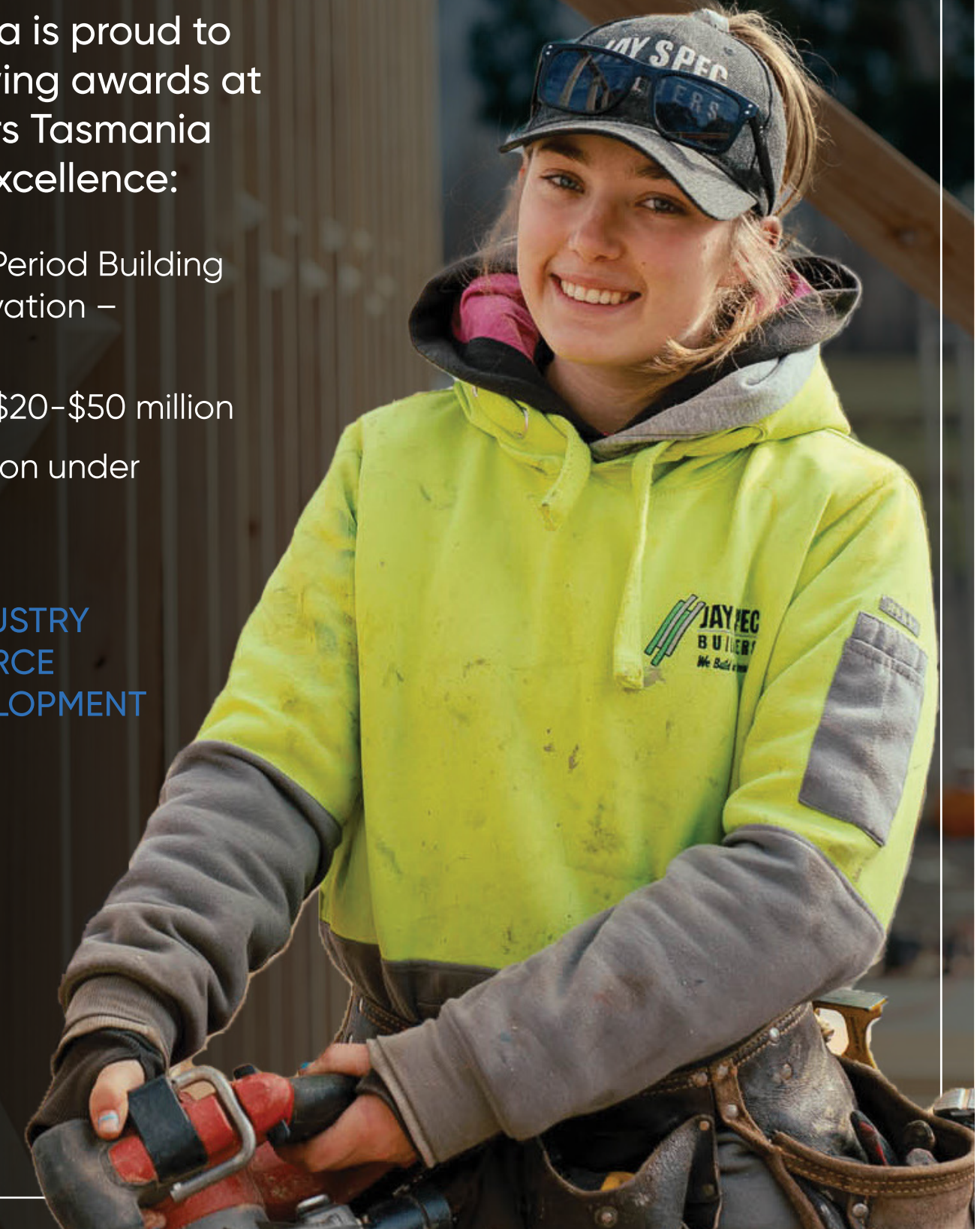
Renovation/ Addition under \$200,000

YOUR BUILDING INDUSTRY  
FUND FOR WORKFORCE  
TRAINING AND DEVELOPMENT



1800KSTONE (1800 578 663)

KEYSTONE.COM.AU





## Restoration / Renovation

Heritage Listed or Period Building – Commercial



### **Stubbs Constructions Pty Ltd**

Triabunna Barracks Bed & Breakfast

**Designed by:** David Denman & Associates, Launceston  
**Photo by:** Adam Gibson  
**Region:** South



### **Hutchinson Builders**

UTAS Excelsior Biscuit Works

**Designed by:** Cumulus Studio & Nettletontribe  
**Photo by:** Adam Gibson  
**Region:** South



### **Access Solutions**

Geeveston Town Hall

**Designed by:** 1+2 Architects  
**Photo by:** Huon Valley Council  
**Region:** South



### **Vos Construction & Joinery**

Parliament Square

**Designed by:** FJMT Studio  
**Photo by:** Rob Burnett  
**Region:** South

## Display Home

Open Value



### **Wilson Homes**

Howrah Display Home

**Designed by:** Stewart Everitt  
**Photo by:** Wilson Homes  
**Region:** South



### **Abode Designer Homes**

Enterprize Drive

**Designed by:** Abode Designer Homes  
**Photo by:** Prime Perspectives  
**Region:** North

## Renovation / Fit-Out

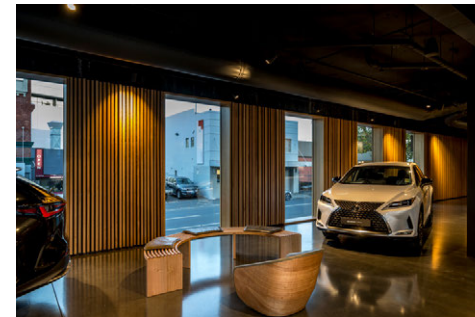
Under \$1 Million



### **Fairbrother Facility Management**

Hobart City High School – Ogilvie High

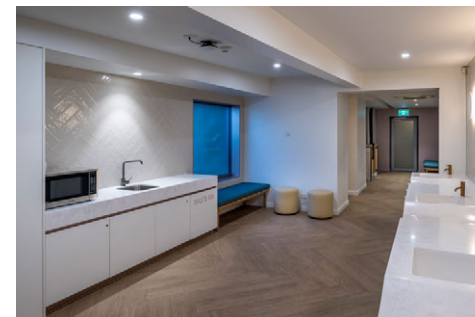
**Designed by:** GHD Woodhead  
**Photo by:** Cam Ship  
**Region:** South



### **Vos Construction & Joinery**

Lexus Showroom

**Designed by:** Core Collective  
**Photo by:** Rob Burnett  
**Region:** South



### **Vos Construction & Joinery**

Paterson West Car Park Amenities

**Designed by:** Edwards & Simpson Architects  
**Photo by:** Rob Burnett  
**Region:** North

## Renovation / Fit-Out

\$1 - \$5 Million



### **AJR Construct**

Gateway Community Care – Don Centre

**Designed by:** Andrew Smith Architects  
**Photo by:** Kenny Fok Chak  
**Region:** North West



### **Hutchinson Builders**

Department of Justice Fit-Out

**Designed by:** Andrew Francis, Francis & Burne  
**Photo by:** Anjie Blair  
**Region:** South



### **Hutchinson Builders**

Ochre Medical Centre Fit-Out

**Designed by:** Preston Lane  
**Photo by:** Adam Gibson  
**Region:** South



### **Fairbrother Construction**

Murray Street Accommodation

**Designed by:** Philp Lighton Architects  
**Photo by:** David Dickson  
**Region:** South



### **Dillon Builders**

Spring Bay Mill – Event Spaces: Banksia Room, Tin Shed & Amphitheatre

**Designed by:** Gilby & Brewin Architecture  
**Photo by:** Louise Dillon  
**Region:** South





Your Industry Specialists

Your go-to construction insurance broker

## Builders are better off with MBIB.

We help keep your business moving.



### WORKERS COMPENSATION

We offer competitive premiums that reward workplace safety



### CONTRACT WORKS

We know how to handle claims and minimise your losses



### LEGAL EXPENSES

Cover legal costs you need to defend workmanship or resolve payment disputes

[mbib.com.au](http://mbib.com.au)

03 6331 8935

Master Builders Insurance Brokers Pty Ltd  
ABN 17 110 143 550 | AFSL 281729

## Renovation / Fit-Out

\$1 - \$5 Million



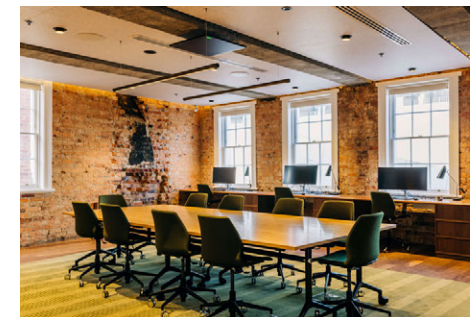
**Vos Construction & Joinery**  
Devonport Church of Christ

**Designed by:** S. Group  
**Photo by:** Rob Burnett  
**Region:** North West



**Mead Con**  
Geneva Administration Building

**Designed by:** S. Group  
**Photo by:** Simon Sturzaker  
**Region:** North West

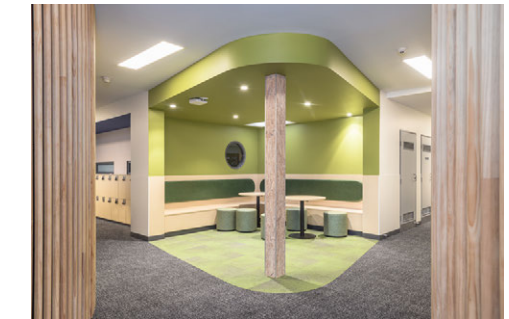


**Hutchinson Builders**  
UTAS Excelsior Biscuit Works

**Designed by:** Cumulus Studio & Nettletontribe  
**Photo by:** Adam Gibson  
**Region:** South

## Renovation / Fit-Out

\$5 - \$10 Million



**Mead Con**  
Devonport High School Redevelopment

**Designed by:** Artas  
**Photo by:** Simon Sturzaker  
**Region:** North West

## Renovation / Fit-Out

Over \$10 Million



**Vos Construction & Joinery**  
Parliament Square

**Designed by:** FJMT Studio  
**Photo by:** Rob Burnett  
**Region:** South



1300 627 628  
[masnational.com.au](http://masnational.com.au)

Hire. Train. Retain.

Scan to learn more about Mas Jobs



Proudly part of  
**intwork**



AUSTRALIAN MADE QUALITY  
MASONRY CONCRETE PRODUCTS  
BUILT TO LAST.



## AUSTRALIA'S LEADING MASONRY MANUFACTURER

Adbri Masonry produces an award winning range of concrete bricks as well as Besser® Blocks, pavers and retaining walls throughout Australia's East Coast, South Australia and in Tasmania.

Big or small, we're Always Ready to help make your next project a success.

For more information contact us 1300 365 565 | [adbrimasonry.com.au](http://adbrimasonry.com.au)



## Education Facility



**Hutchinson Builders**  
UTAS University College

**Designed by:** Nettletontribe  
**Photo by:** Adam Gibson  
**Region:** South



**Fairbrother Construction**  
UTAS Cradle Coast Campus

**Designed by:** John Wardle Architects  
**Photo by:** Adam Gibson  
**Region:** North West



**Vos Construction & Joinery**  
UTAS Library

**Designed by:** John Wardle Architects  
**Photo by:** Rob Burnett  
**Region:** North

## Health Facility



**Hutchinson Builders**  
Ochre Medical Centre Fit out

**Designed by:** Preston Lane  
**Photo by:** Adam Gibson  
**Region:** South



**Fairbrother Construction**  
LGH PIU

**Designed by:** Philp Lighton Architects  
**Photo by:** Dave Groves  
**Region:** North

# MITRE 10 WOULD LIKE TO CONGRATULATE THIS YEARS WINNERS



**LAUNCESTON**  
**Becks Mitre 10**  
521 Boland St  
Ph: 6332 6201

**DELORAIN**  
**Becks Mitre 10**  
31 Church St  
Ph: 6362 2966

**ST HELENS**  
**St Helens Mitre 10**  
17 Cecilia St  
Ph: 6376 1119

**SCOTTSDALE**  
**Becks Mitre 10**  
8/10 Ellenor St  
Ph: 6352 2965

**WIVENHOE**  
**Becks Mitre 10**  
46 Main Rd  
Ph: 6431 1688

**ULVERSTONE**  
**Becks Mitre 10**  
48 Alexandra St  
Ph: 6425 1455

**SMITHTON**  
**Armour Mitre 10**  
2 Brittons Rd  
Ph: 6452 2174

**LATROBE**  
**Wells Mitre 10**  
110-114 Gilbert St  
Ph: 6426 5000

**DEVONPORT**  
**Becks Mitre 10**  
25 Don Rd  
Ph: 6424 1481

**PORT SORELL**  
**Becks Mitre 10**  
104 Alexander St  
Ph: 6428 6811

**KINGS MEADOWS**  
**Becks Frame & Truss**  
10-12 Merino St  
Ph: 6332 9700

# CONTACT MITRE 10 TRADE FOR ALL YOUR TRADE NEEDS

**Simon Hidding (Launceston)**  
0400 150 203  
simon.hidding@mitre10.com.au

**Rob Scott (Launceston)**  
0417 053 740  
rob.scott@mitre10.com.au

**Stephen French (Devonport)**  
0400 501 304  
stephen.french@mitre10.com.au

**Neil Philpott (Launceston)**  
0418 375 341  
neil.philpott@mitre10.com.au

**David Mattarozzi (Launceston)**  
0460 297 441  
david.mattarozzi@mitre10.com.au

**Shayne Robertson (Devonport)**  
0408 140 407  
shayne.robertson@mitre10.com.au

**Philip Pearton (Launceston)**  
0409 217 969  
phil.pearton@mitre10.com.au

**Shaun Krushka (East Coast)**  
0419 338 891  
shaun.krushka@mitre10.com.au

**Dean Clark (Devonport)**  
0447 787 282  
dean.clark@mitre10.com.au

**Steve Harvey (Launceston)**  
0457 973 597  
steve.harvey@mitre10.com.au

**Leigh Scolyer (Trade Plumbing)**  
0418 130 698  
leigh.scolyer@mitre10.com.au

**Phil Guthrie (Burnie)**  
0407 529 041  
phil.guthrie@mitre10.com.au

**Becks Estimating Department - Tony Luck**  
03 6332 6248  
7310.estimating@mitre10.com.au

**Becks Frame & Truss Manager - Scott Ryland**  
0400 150 249  
scott.ryland@mitre10.com.au



To find out more, visit  
**planbuild.tas.gov.au**

Using the PlanBuild Tasmania Enquiry service, anyone can enter an address in the portal to see what planning zones, codes and other information apply to a property.

Find information on:

- who to consult (e.g. local council)
- who can do the work (e.g. a licensed builder)
- what to apply for (e.g. a permit).



Department of Justice



**James Hardie is a proud sponsor of the Master Builders Tasmania 2022 Awards for Excellence.**

We would like to congratulate all award winners and nominees for showcasing the exceptional work that is undertaken in Tasmania's housing and construction industry.

Discover more at [jameshardie.com.au](http://jameshardie.com.au)





Congrats to all  
the finalists!

## Why Bank of *us*?

Well, we get it.

As a proud MBT service provider member, and a locally owned Tasmanian business, we understand the challenges facing Tasmanian small businesses. That's why we provide competitive products and services to directly support MBT members and their businesses, which in turn helps to boost the prosperity of the Tasmanian building and construction industry.



The only 100%  
Tasmanian bank



Banking designed  
for Tasmanians



People, not  
algorithms



bankofus.com.au  
1300 306 716

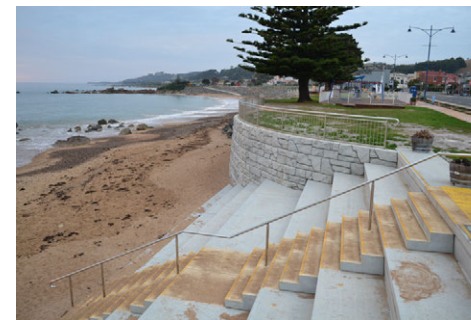
*us is a  
plus*



**Bank of *us*.**  
Tasmania | Community | Customer

Bank of us is a trading name of B&E Ltd ABN 32 087 652 088 AFSL & Australian Credit Licence 236870 BSB 632 001

## Civil Construction



**Fairbrother Construction**  
Penguin Foreshore

**Designed by:** Tasmanian  
Consulting Service  
**Photo by:** Luke Turner  
**Region:** North West



**Oliver Kelly Group**  
Henderson Dam

**Designed by:** TasWater  
**Photo by:** Oliver Kelly Group  
**Region:** North



**Vos Construction &  
Joinery**  
Simplot Devonport  
Refrigeration Building

**Designed by:** GHD Pty Ltd  
**Photo by:** Rob Burnett  
**Region:** North West



**Vos Construction &  
Joinery**  
My State Bank Arena

**Designed by:** Philp Lighton  
Architects  
**Photo by:** Rob Burnett  
**Region:** South

## Entertainment + Recreation Facility



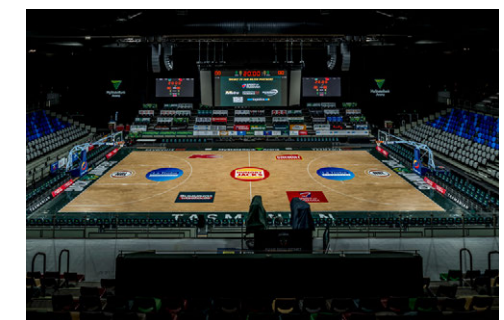
**Stubbs Constructions Pty  
Ltd**  
Wynyard Waterfront Multi-Use  
Community Facility

**Designed by:** 6ty Pty Ltd  
**Photo by:** Aaron Jones  
**Region:** North West



**Fairbrother Construction**  
Scottsdale Pool

**Designed by:** Design Intent  
**Photo by:** Dave Groves  
**Region:** North



**Vos Construction &  
Joinery**  
My State Bank Arena

**Designed by:** Philp Lighton  
Architects  
**Photo by:** Rob Burnett  
**Region:** South



# FEEL CONFIDENT YOU'RE NAILING HEALTH & SAFETY

HazardCo is a digital health and safety system that will cut the time you spend on WHS without cutting corners.

## FINALLY, HEALTH & SAFETY MADE SIMPLE

Say goodbye to paperwork and do your health and safety digitally.

- ✓ Digital SWMS
- ✓ Incident reporting and more
- ✓ Site specific safety plan generator
- ✓ Hazard boards with QR codes
- ✓ Automated contractor management
- ✓ Free app for easy crew inductions
- ✓ 24/7 incident support
- ✓ Phone advice

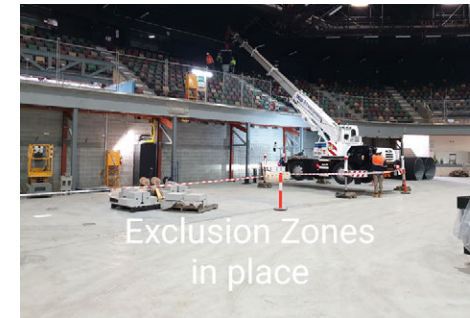
GET A FREE TRIAL



1800 954 702

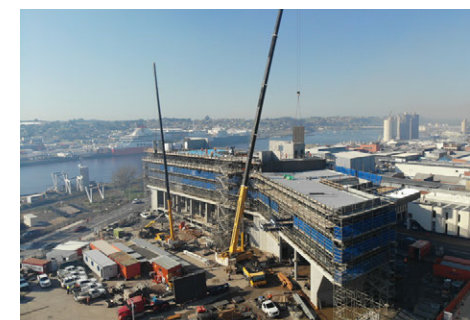
info@hazardco.com

### Work Health and Safety Commercial



**Vos Construction & Joinery**  
My State Bank Arena

**Designed by:** Philp Lighton Architects  
**Photo by:** Peter Coxhell  
**Region:** South



**Fairbrother Construction**  
Waterfront Hotel

**Designed by:** Lyons Architects/ Scanlan Architects  
**Photo by:** Brad Symmons  
**Region:** North West

### Work Health and Safety Residential



**SFAW**  
Roof Safety Initiative

**Designed by:** Scott Flett  
**Photo by:** Matt Sansom  
**Region:** South

### Energy Efficiency Commercial



**Fairbrother Construction**  
UTAS Cradle Coast Campus

**Designed by:** John Wardle Architects  
**Photo by:** Adam Gibson  
**Region:** North West

### Energy Efficiency Residential



**Jamieson Edwards Builders**  
Project Cambridge

**Designed by:** Skizze Building Design  
**Photo by:** Rosie Hastie  
**Region:** South



**JA Building & Construction Pty Ltd**  
Jinglers Drive

**Designed by:** Design to Live  
**Photo by:** Cameron Jones  
**Region:** North



**My Build Collective**  
Leonard Street

**Designed by:** My Build Collective  
**Photo by:** Anjie Blair  
**Region:** North



**Valley Workshop**  
Hillwood Project

**Designed by:** Warren French  
**Photo by:** Massimo Combi  
**Region:** North



## Best Use of Australian Made Products Residential



**Scott Flett Architecture Workshop**  
Wattle Bird House

**Designed by:** Scott Flett  
**Photo by:** Matt Sansom  
**Region:** South



**My Build Collective**  
Leonard Street

**Designed by:** My Build Collective  
**Photo by:** Anjie Blair  
**Region:** North



**Valley Workshop**  
Port Sorell

**Designed by:** Valley Workshop  
**Photo by:** Massimo Combi  
**Region:** North West

**Consumer, Building and Occupational Services (CBOS)**  
Tasmania's building and construction industry regulator

Consumer, Building and Occupational Services  
Department of Justice

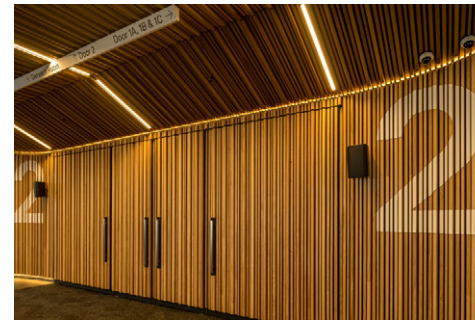
**Tasmanian Government**

## Best Use of Australian Made Products Commercial



**Fairbrother Construction**  
UTAS Cradle Coast Campus

**Designed by:** John Wardle Architects  
**Photo by:** Adam Gibson  
**Region:** North West



**Vos Construction & Joinery**  
My State Bank Arena

**Designed by:** Philp Lighton Architects  
**Photo by:** Alistair Bett  
**Region:** South

**It's easy to forget to love our Water.**

**Let's love our Water**

**taswater** [www.taswater.com.au](http://www.taswater.com.au) | 13 6992

## Soil and Water Management Commercial



**AJR Construct**  
Maria Island Wastewater Transfer System

**Designed by:** GHD  
**Photo by:** Louis Creative Studio Pty Ltd  
**Region:** South



**Fairbrother Construction**  
Willis Street

**Designed by:** John Wardle Architects  
**Photo by:** Fairbrother  
**Region:** North



**Dillon Builders**  
Spring Bay Mill Redevelopment Project – Soil and Water Management

**Designed by:** Gilby & Brewin Architecture  
**Photo by:** Louise Dillon  
**Region:** South



**Vos Construction and Joinery**  
My State Bank Arena

**Designed by:** Philp Lighton Architects  
**Photo by:** Peter Coxhell  
**Region:** South



**Did you know that construction sites can lose up to 400 tonnes of sediment per hectare annually?\***

Sediment run-off can negatively impact our local waterways. Do your part to reduce sediment run-off with effective on-site Erosion and Sediment Control practices – find out how with free online resources:

[www.mbatas.org.au/services-and-advice/erosion-sediment-control-resources/](http://www.mbatas.org.au/services-and-advice/erosion-sediment-control-resources/)



\*Value based on Revised Universal Soil Loss Equation for a typical urban construction site in Tasmania, with moderately erosive soils and slope.






Proud to be associated with the 2022 MBT Awards

**CLARK WINDOWS**

QUALITY  
STRENGTH  
SERVICE


[www.clarkwindows.com.au](http://www.clarkwindows.com.au)

### Specialist Contractor of the Year




**Fairbrother Joinery**  
UTAS Cradle Coast Campus

**Designed by:** John Wardle Architects & Philp Lighton Architects  
**Photo by:** Adam Gibson  
**Region:** North West




**Access Solutions**  
Parliament Square Development

**Designed by:** FJMT Studio  
**Photo by:** Jacinda Hochman  
**Region:** South



**Vos Construction & Joinery**  
Parliament Square

**Designed by:** FJMT Studio  
**Photo by:** Rob Burnett  
**Region:** South



**TAKING YOU PLACES**

Specialists in bespoke commercial and residential solutions

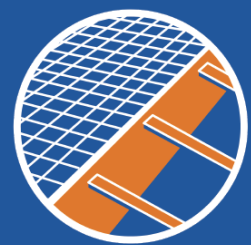
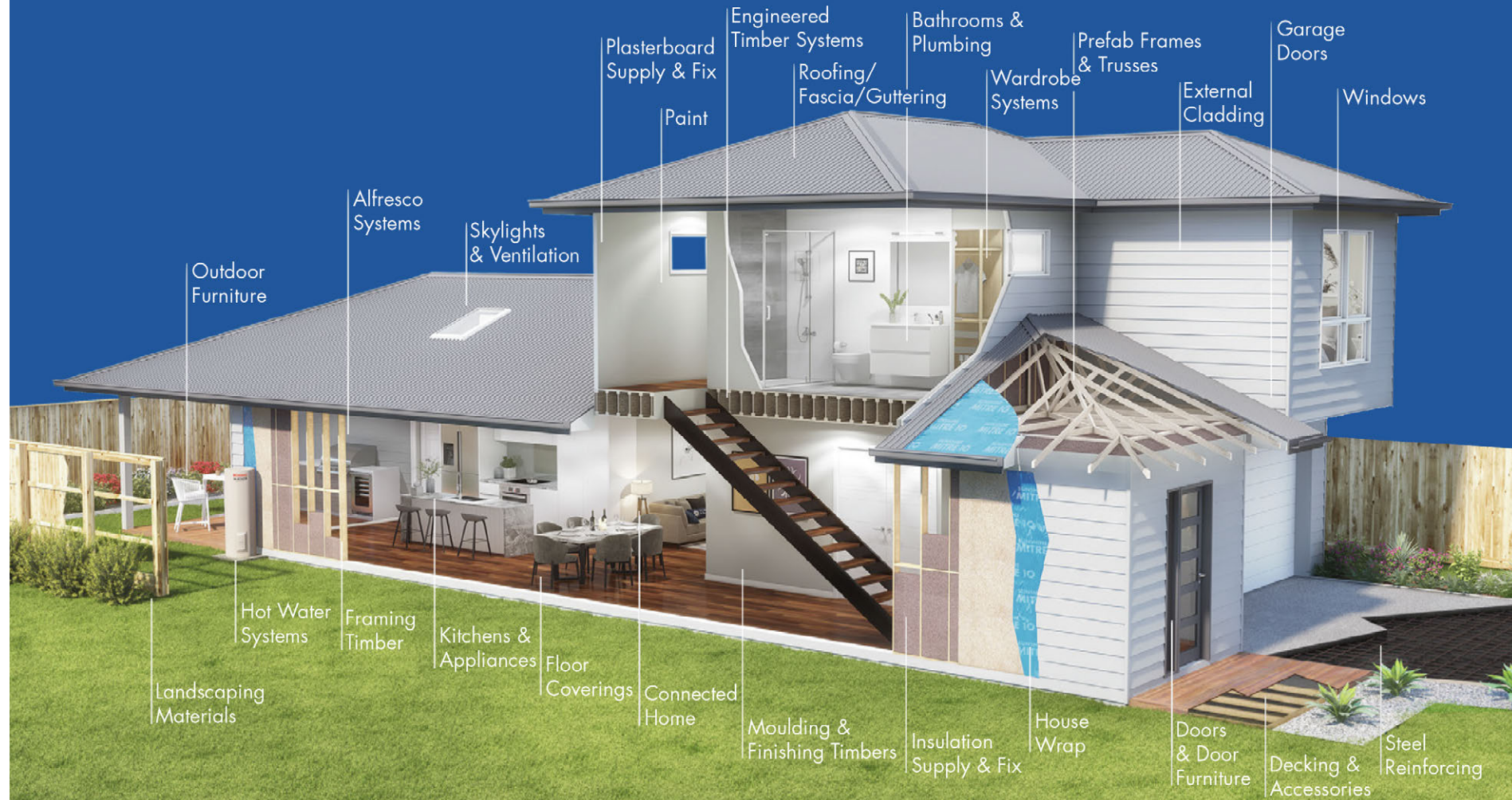
**ACCESS Solutions**

[www.access-solutions.com.au](http://www.access-solutions.com.au)

ELEVATORS • ESCALATORS • DISABLED ACCESS



# WHOLE OF HOUSE



**FOUNDATIONS**  
Slab Hardware,  
Floor Systems



**FRAME & TRUSS**  
Wall Frame, Roof Trusses,  
Pine Framing, Engineered  
Timbers



**LOCK UP**  
Roofing, Fascia,  
Gutters, Insulation,  
Flooring, Cladding



**FIX**  
Plaster, Linings, Doors,  
Architraves, Skirting,  
Kitchen, Joinery



**FIT OUT**  
Plumbing, Appliances,  
Door Furniture, Floor  
Coverings, Finishes



**CLENNETT'S** **TRADE HOTLINE: 1800 633 600**  
MIGHTY HELPFUL MITRE 10

KINGSTON • HUONVILLE • MORNINGTON • GLENORCHY • SORELL • SWANSEA

## Dwelling Construction

Under \$200,000



**Jamieson Edwards Builders**  
Project Cambridge

**Designed by:** Skizze Building Design  
**Photo by:** Rosie Hastie  
**Region:** South

## Dwelling Construction

\$200,000 - \$350,000



**Eiszele Construction**  
Strickland House

**Designed by:** Marc from Dynamic Design  
**Photo by:** Jeremy Button  
**Region:** South



**AJR Construct**  
Manchester Residence

**Designed by:** Green Design  
**Photo by:** Kenny Fok Chak  
**Region:** North West

## Dwelling Construction

\$350,000 - \$500,000



**Faulkner Building**  
Leading Light Shack

**Designed by:** Loop Architecture  
**Photo by:** Vince Brophy  
**Region:** North



**Mick King Contracting**  
Dutton Home

**Designed by:** Steve Penton Building Design  
**Photo by:** Angela Nicolle  
**Region:** North West

MBT is appreciative of the support provided to our Hands-On Apprentice and State Apprentice of the Year by Ramset Reid.



Reinforcing The Foundations Of Australia Since 1920

ARC is the original supplier of steel reinforcement to the Australian construction industry.

Supported by the largest branch network in Tasmania, we offer Square and Rectangular Reinforcing Mesh, Trench Mesh, Weldmesh, accessories, ARC Fences and much more.

We're located at:  
Burnie | Hobart | Launceston

To find out more:  
[www.arcreso.com.au](http://www.arcreso.com.au)  
131 557





# Dwelling Construction

\$500,000 - \$750,000



**Pensini Constructions**  
Embers Bay of Fires

**Designed by:** Jennifer Binns  
Building Design  
**Photo by:** JMI Photography  
**Region:** South



**Inhabit Construction**  
Eton House

**Designed by:** Nathan Crump  
from Room 11 Architects  
**Photo by:** Chris Crerar  
**Region:** South



**Anthony Jarvis Builder / Joiner**  
Wilson Residence

**Designed by:** PLA Designs  
Drawn A.R.M  
**Photo by:** Kim Anderson  
**Region:** North West



**Oliver Kelly Group**  
Paradise Place Residence

**Designed by:** Starbox  
Architecture  
**Photo by:** Native Design Agency  
**Region:** North West



**Beardwood**  
Whitegum Residence

**Designed by:** Adams Building  
Design  
**Photo by:** Simon Sturzaker  
**Region:** North West



**Valley Workshop**  
Hillwood Project

**Designed by:** Warren French  
**Photo by:** Massimo Combi  
**Region:** North



**Zanetto Builders**  
Tasman

**Designed by:** Engineering Plus  
**Photo by:** Matthew Long  
**Region:** North



**Mead Con**  
River Road Residence

**Designed by:** Lachlan Walsh  
**Photo by:** Aaron Jones  
**Region:** North West

# Dwelling Construction

\$750,000 - \$1 Million



**3D Construction and Developments**  
Newstead Crescent

**Designed by:** Cataract Designs  
**Photo by:** Rob Burnett  
**Region:** North



**Beardwood**  
The Char House

**Designed by:** Starbox  
Architecture  
**Photo by:** Jeremy Scott  
**Region:** North West



**Beardwood**  
The Storehouse

**Designed by:** Starbox  
Architecture  
**Photo by:** Aaron Jones  
**Region:** North West



**My Build Collective**  
Leonard Street

**Designed by:** My Build  
Collective  
**Photo by:** Anjie Blair  
**Region:** North



**Davies Construction**  
River Haus

**Designed by:** Davies Design  
and Construction  
**Photo by:** Anjie Blair  
**Region:** North



**Mead Con**  
Beach Road Residence

**Designed by:** S. Group  
**Photo by:** Oscar Sloane  
**Region:** North West



**Inhabit Construction**  
Le Chateau

**Designed by:** CMK Architects  
**Photo by:** Cameron Richardson  
**Region:** North



## Dwelling Construction

\$1 Million - \$2 Million



**DS Building**  
Single Hill

**Designed by:** Archier  
**Photo by:** Anjie Blair  
**Region:** South



**Delaney & Co and Clever Design**  
Caladium Place

**Designed by:** Clever Design  
**Photo by:** Peter Mathew  
**Region:** South

## Dwelling Construction

Over \$2 Million



**Scott Flett Architecture Workshop**  
Wattle Bird House

**Designed by:** Scott Flett  
**Photo by:** Matt Sansom  
**Region:** South



**3D Construction and Developments**  
Aram Place

**Designed by:** Honed Architect/  
Lydia Maskiell Interiors  
**Photo by:** Anjie Blair  
**Region:** North



*Dreaming of a new home or renovation?*  
**Make sure your builder is a Master Builder.**

[mbatas.org.au](http://mbatas.org.au)



**MASTER BUILDERS**  
T A S M A N I A

Is your builder a Master Builder?



Cbus is a proud sponsor of the  
**Master Builders Tasmania 2022 Awards for Excellence**, recognising projects and progress in TAS

# Congratulations to the award winners

 1300 361 784

 [cbussuper.com.au](http://cbussuper.com.au)

You should read the Employer Handbook, Cbus Industry Superannuation Product Disclosure Statement (PDS) and other relevant documentation to decide whether Cbus is right for you. Also read the Target Market Determination at [cbussuper.com.au/tmd](http://cbussuper.com.au/tmd). Call 1300 361 784 or visit [www.cbussuper.com.au](http://www.cbussuper.com.au)

Cbus' Trustee: United Super Pty Ltd ABN 46 006 261 623 AFSL 233792 Cbus ABN 75 493 363 262.



# 2021 National Award Winners

We congratulate the following 2021 State Winners, who went on to win their category at a National level.



## Best Use of Australian Made Products Residential

**SFAW**  
**The Flett Flashing**  
**Designed by:** Scott Flett  
**Photograph by:** Brett Boardman

SFAW's Flett Flashing is the world's first 3D printed roof flashing. 3D printing allows the flashing to perfectly match any specified roofing profile and colour and permits junctions between roofing sheets of different pitches to be installed without difficulty. This invention makes architectural cladding quicker, easier and cheaper to install and represents a step change for the roofing and cladding industry.



## Best Use of Australian Made Products Commercial

**Fairbrother Pty Ltd**  
**Hotel Verge**  
**Designed by:** Cumulus Studio  
**Photograph by:** Dave Groves

Fairbrother Pty Ltd has worked diligently to clad this building extraordinarily well. Externally, a tactile skin of Australian-made clay bricks gives the building a unique warmth and tone, while internally the materiality of the project is expressed through the striking use of Australian Wormy Chestnut in both solid timber and veneer panels. The use of these materials in combination has culminated in the delivery of a great showcase of Australian-made products.







## Specialist Contractor of the Year Construction

### **Vos Construction & Joinery** **UTAS – The Hedburg Specialised Joinery Panelling**

**Designed by:** Liminal Studio with WOHA  
**Photograph by:** Rob Burnett

In particular, three elements of this panelling package stand out. First, the blackwood veneer panels that form the public area ceiling linings are striking and beautifully constructed and installed. Second, the acoustic linings to the Salon, fabricated from timber salvaged from the demolished Hedburg Garage on the site, is a beautiful, artful and outstanding piece of work. And third, the acoustic reflector and wall battens fixed within the Recital Hall are an astounding piece of work. Overall, Vos Construction & Joinery's capabilities in production and installation, as showcased by this project, make it a worthy winner of this award.



## National Contract Home

\$350,000 to \$500,000

### **Beardwood Pty Ltd – Seascape Residence**

**Designed by:** N+B Design  
**Photograph by:** Aaron Jones

Beardwood Pty Ltd demonstrated commendable negotiation skills and substantial flexibility to deliver this high quality project for a competitive price. All aspects of the build are crisply detailed, and built in features and joinery are effortlessly integrated into the construction to produce a stunning house that takes full advantage of its Bass Strait outlook. Overall, this is an outstanding project and a worthy winner in a highly competitive category.





*Congratulations* to all our finalists!



**MASTER BUILDERS**  
T A S M A N I A

**2022** AWARDS *for*  
EXCELLENCE



**Southern Region**

5 / 116 Bathurst Street, Hobart  
T: 6210 2000  
E: headoffice@mbatas.org.au

**Northern Region**

30 Gleadow Street, Invermay

**North West Region**

41 Steele Street, Devonport

[mbatas.org.au](http://mbatas.org.au)

